

# 100C23KD10

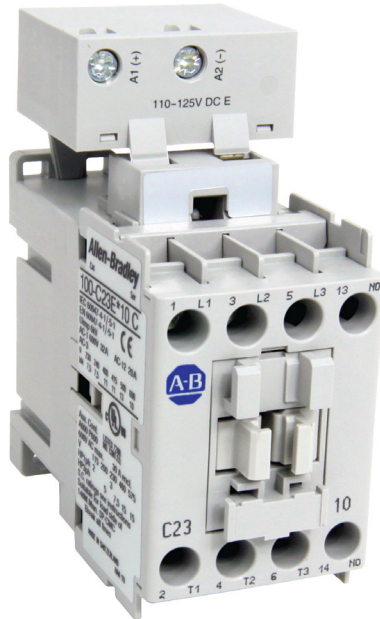
Allen-Bradley 100C Contactor 11kW 3Pole 110VAC 50 and 60Hz  
Coil 1NO Contact Auxiliary



**Allen-Bradley**

by ROCKWELL AUTOMATION

CONTACTORS



<b>Component type</b>	Power contactor, AC switching
<b>Range</b>	100C
<b>Model</b>	N/A
<b>Alternative</b>	CALL FOR ALTERNATIVE

The Allen-Bradley 100-C contactor line offers compact, high-performance design in 9 to 97 A contactors. These energy efficient contactors are designed to control motors and other loads. Straightforward wiring and installation process ensure quick and easy setup, reducing downtime and increasing productivity.

## ELECTRICAL

Number of normally open contacts as main contact	3.0
Number of normally closed contacts as main contact	0.0
Rated operation current $I_e$ at AC-3, 400 V	23.0 A
Rated operation power at AC-3, 400 V	11.0 kW
Rated operation current $I_e$ at AC-1, 400 V	32.0 A
Max. rated operation voltage $U_e$ AC	690.0 V
Voltage type for actuating	AC
Control supply voltage $U_s$ at AC 50HZ	110.0 V
Number of auxiliary contacts as normally open contact	1.0
Number of auxiliary contacts as normally closed contact	0.0
Rated operation current $I_e$ at AC-3, 690 V	12.0 A
Rated operation power at AC-3, 690 V	10.0 kW
Rated operation power at AC-4, 400 V	4.0 kW
Control supply voltage $U_s$ at AC 60HZ	110.0 V
Power consumption, AC coil pickup	75.0 VA
Power consumption, AC coil hold-in	9.5 VA
Type of electrical connection of main circuit	Screw connection
Rated operation current $I_e$ at AC-4, 400 V	9.0 A

## CONSTRUCTION

Degree of protection (IP)	IP20
Mounting method	DIN-rail/screw

## DIMENSIONS

Height	81.0 mm
Width	45.0 mm
Depth	86.5 mm
Weight	0.39 kg

# 100C23KD10

Allen-Bradley 100C Contactor 11kW 3Pole 110VAC 50 and 60Hz  
Coil 1NO Contact Auxiliary



**Allen-Bradley**

by ROCKWELL AUTOMATION

CONTACTORS

## DIMENSIONAL DIAGRAM

