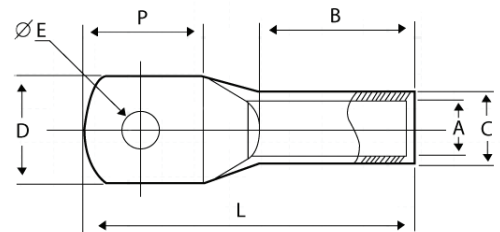
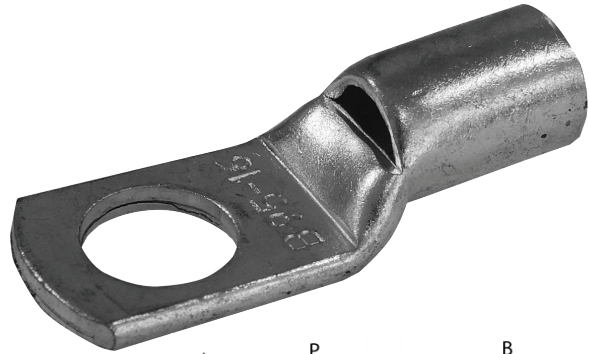


Alco

Non-Insulated Lugs

FEATURES:

- Non-insulated electro grade copper crimp lugs suitable for stranded to fine-stranded copper cable
- Electro tinned finish for corrosion resistance
- 99.9% copper for high conductivity
- Includes inspection port
- Conform to Australian Standards
- Independently tested and complies to Australian Standard AS4325.1 cl7 (10-400mm²)
- Operating temperature: -55°C to +155°C



SPECIFICATIONS:

Part Number	Conductor Size (mm ²)	Stud Size (mm)	Dimensions (mm)						Recommended Heatshrink			Box QTY
			A	C	D	P	B	L	Thin Wall	Medium Wall	Thick Wall	
ALCL1.5M4/100	1.5	4.0	1.8	3.7	8.0	9.0	7.0	18	HSTNW7.0/3.55	HSMWGL10/3L	HSTKWGL13/4	100
ALCL1.5M5/100	1.5	5.0	1.8	3.7	9.0	10	7.0	19	HSTNW7.0/3.55	HSMWGL10/3L	HSTKWGL13/4	100
ALCL1.5M6/100	1.5	6.0	1.8	3.7	9.0	11	7.0	20	HSTNW7.0/3.55	HSMWGL10/3L	HSTKWGL13/4	100
ALCL2.5M4/100	2.5	4.0	2.4	4.0	8.0	9.0	7.0	18	HSTNW7.0/3.55	HSMWGL10/3L	HSTKWGL13/4	100
ALCL2.5M5/100	2.5	5.0	2.4	4.0	8.0	10	7.0	18	HSTNW7.0/3.55	HSMWGL10/3L	HSTKWGL13/4	100
ALCL2.5M6/100	2.5	6.0	2.4	4.0	10	12	7.0	20	HSTNW7.0/3.55	HSMWGL10/3L	HSTKWGL13/4	100
ALCL2.5M8/100	2.5	8.0	2.4	4.0	11	16	9.0	26	HSTNW7.0/3.55	HSMWGL10/3L	HSTKWGL13/4	100
ALCL4M5/100	4.0	5.0	3.1	4.8	11	12	9.0	22	HSTNW7.0/3.55	HSMWGL10/3L	HSTKWGL13/4	100
ALCL4M6/100	4.0	6.0	3.1	4.8	11	12	9.0	22	HSTNW7.0/3.55	HSMWGL10/3L	HSTKWGL13/4	100
ALCL4M8/100	4.0	8.0	3.1	4.8	11	16	11	29	HSTNW7.0/3.55	HSMWGL10/3L	HSTKWGL13/4	100
ALCL6M5/50	6.0	5.0	3.8	5.5	10	11	12	26	HSTNW7.0/3.55	HSMWGL10/3L	HSTKWGL13/4	50
ALCL6M6/50	6.0	6.0	3.8	5.5	10	11	12	26	HSTNW7.0/3.55	HSMWGL10/3L	HSTKWGL13/4	50
ALCL6M8/50	6.0	8.0	3.8	5.5	12	16	12	31	HSTNW10.0/5.0	HSMWGL16/5L	HSTKWGL13/4	50
ALCL6M10/50	6.0	10.0	3.8	5.5	17	23	12	39	HSTNW10.0/5.0	HSMWGL16/5L	HSTKWGL13/4	50
ALCL10M5/25	10	5.0	4.5	6.9	12	14	11	28	HSTNW10.0/5.0	HSMWGL16/5L	HSTKWGL13/4	25
ALCL10M6/25	10	6.0	4.5	6.9	12	14	11	28	HSTNW10.0/5.0	HSMWGL16/5L	HSTKWGL13/4	25
ALCL10M8/25	10	8.0	4.5	6.9	12	16	11	30	HSTNW10.0/5.0	HSMWGL16/5L	HSTKWGL13/4	25
ALCL10M10/25	10	10.0	4.5	6.9	17	20	11	35	HSTNW13/6.5	HSMWGL16/5L	HSTKWGL19/6	25

Wattmaster

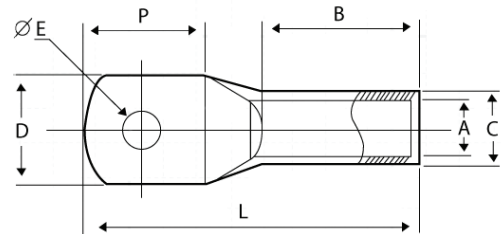
THE BRAND ELECTRICIANS RELY ON

T: 1300 300 747 F: 1300 300 074

www.wattmaster.com.au

Alco

Non-Insulated Lugs



SPECIFICATIONS:

Part Number	Conductor Size (mm ²)	Stud Size (mm)	Dimensions (mm)						Recommended Heatshrink			Box QTY
			A	C	D	P	B	L	Thin Wall	Medium Wall	Thick Wall	
ALCL10M12/25	10	12.0	4.5	6.9	17	20	11	35	HSTNW13/6.5	HSMWGL16/5L	HSTKWGL19/6	25
ALCL16M6/25	16	6.0	5.9	8.0	12	15	20	39	HSTNW13/6.5	HSMWGL16/5L	HSTKWGL13/4	25
ALCL16M8/25	16	8.0	5.9	8.0	12	15	20	39	HSTNW13/6.5	HSMWGL16/5L	HSTKWGL13/4	25
ALCL16M10/25	16	10.0	5.9	8.0	17	26	20	50	HSTNW13/6.5	HSMWGL16/5L	HSTKWGL19/6	25
ALCL16M12/25	16	12.0	5.9	8.0	17	26	20	50	HSTNW13/6.5	HSMWGL16/5L	HSTKWGL19/6	25
ALCL25M6/25	25	6.0	7.0	9.7	14	16	23	42	HSTNW13/6.5	HSMWGL16/5L	HSTKWGL19/6	25
ALCL25M8/25	25	8.0	7.0	9.7	14	16	23	42	HSTNW13/6.5	HSMWGL16/5L	HSTKWGL19/6	25
ALCL25M10/25	25	10.0	7.0	9.7	19	23	23	50	HSTNW18/9	HSMWGL25/8L	HSTKWGL19/6	25
ALCL25M12/25	25	12.0	7.0	9.7	19	16	23	42	HSTNW18/9	HSMWGL25/8L	HSTKWGL19/6	25
ALCL35M6/25	35	6.0	8.4	11.5	16	19	23	46	HSTNW18/9	HSMWGL25/8L	HSTKWGL19/6	25
ALCL35M8/25	35	8.0	8.4	11.5	16	19	23	46	HSTNW18/9	HSMWGL25/8L	HSTKWGL19/6	25
ALCL35M10/25	35	10.0	8.4	11.5	16	19	23	46	HSTNW18/9	HSMWGL25/8L	HSTKWGL19/6	25
ALCL35M12/25	35	12.0	8.4	11.5	19	27	23	53	HSTNW18/9	HSMWGL25/8L	HSTKWGL19/6	25
ALCL50M6/10	50	6.0	9.5	12.7	18	20	23	49	HSTNW18/9	HSMWGL25/8L	HSTKWGL19/6	10
ALCL50M8/10	50	8.0	9.5	12.7	18	20	23	49	HSTNW18/9	HSMWGL25/8L	HSTKWGL19/6	10
ALCL50M10/10	50	10.0	9.5	12.7	18	20	23	49	HSTNW18/9	HSMWGL25/8L	HSTKWGL19/6	10
ALCL50M12/10	50	12.0	9.5	12.7	18	20	23	49	HSTNW18/9	HSMWGL25/8L	HSTKWGL19/6	10
ALCL70M6/10	70	6.0	11.1	14.3	20	23	24	54	HSTNW18/9	HSMWGL25/8L	HSTKWGL19/6	10
ALCL70M8/10	70	8.0	11.1	14.3	20	23	24	54	HSTNW18/9	HSMWGL25/8L	HSTKWGL19/6	10
ALCL70M10/10	70	10.0	11.1	14.3	20	23	24	54	HSTNW18/9	HSMWGL25/8L	HSTKWGL19/6	10
ALCL70M12/10	70	12.0	11.1	14.3	20	23	24	54	HSTNW22/11	HSMWGL25/8L	HSTKWGL19/6	10
ALCL70M16/10	70	16.0	11.1	14.3	20	23	24	54	HSTNW22/11	HSMWGL25/8L	HSTKWGL28/9	10
ALCL95M8/10	95	8.0	13.5	17.5	25	27	25	60	HSTNW22/11	HSMWGL25/8L	HSTKWGL28/9	10
ALCL95M10/10	95	10.0	13.5	17.5	25	27	25	60	HSTNW22/11	HSMWGL25/8L	HSTKWGL28/9	10
ALCL95M12/10	95	12.0	13.5	17.5	25	27	25	60	HSTNW22/11	HSMWGL25/8L	HSTKWGL28/9	10
ALCL95M16/10	95	16.0	13.5	17.5	25	33	25	65	HSTNW22/11	HSMWGL25/8L	HSTKWGL28/9	10
ALCL120M8/10	120	8.0	15.5	20.6	29	29	32	70	HSTNW40/20	HSMWGL35/12L	HSTKWGL28/9	10
ALCL120M10/10	120	10.0	15.5	20.6	29	29	32	70	HSTNW40/20	HSMWGL35/12L	HSTKWGL28/9	10

Wattmaster

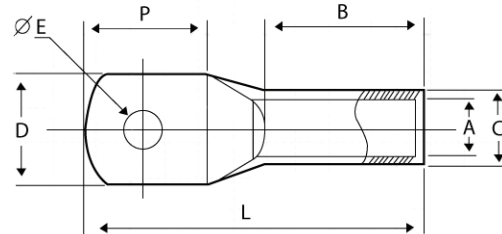
THE BRAND ELECTRICIANS RELY ON

T: 1300 300 747 F: 1300 300 074

www.wattmaster.com.au

Alco

Non-Insulated Lugs



SPECIFICATIONS:

Part Number	Conductor Size (mm ²)	Stud Size (mm)	Dimensions (mm)						Recommended Heatshrink			Box QTY
			A	C	D	P	B	L	Thin Wall	Medium Wall	Thick Wall	
ALCL120M12/10	120	12.0	15.5	20.6	29	29	32	70	HSTNW40/20	HSMWGL35/12L	HSTKWGL28/9	10
ALCL120M16/10	120	16.0	15.5	20.6	29	32	32	75	HSTNW40/20	HSMWGL35/12L	HSTKWGL28/9	10
ALCL120M20/10	120	20.0	15.5	20.6	34	40	32	79	HSTNW40/20	HSMWGL35/12L	HSTKWGL28/9	10
ALCL120MB/10	120	-	15.5	20.6	29	32	32	70	HSTNW40/20	HSMWGL35/12L	HSTKWGL28/9	10
ALCL150M8/10	150	8.0	16.3	22.2	31	34	32	78	HSTNW40/20	HSMWGL35/12L	HSTKWGL38/12	10
ALCL150M10/10	150	10.0	16.3	22.2	31	34	32	78	HSTNW40/20	HSMWGL35/12L	HSTKWGL38/12	10
ALCL150M12/10	150	12.0	16.3	22.2	31	34	32	78	HSTNW40/20	HSMWGL35/12L	HSTKWGL38/12	10
ALCL150M16/10	150	16.0	16.3	22.2	31	34	32	78	HSTNW40/20	HSMWGL35/12L	HSTKWGL38/12	10
ALCL150MB/10	150	-	16.3	22.2	31	34	32	78	HSTNW40/20	HSMWGL35/12L	HSTKWGL38/12	10
ALCL185M10/6	185	10.0	18.3	24.3	34	35	32	82	HSTNW40/20	HSMWGL35/12L	HSTKWGL38/12	6
ALCL185M12/6	185	12.0	18.3	24.3	34	35	32	82	HSTNW40/20	HSMWGL35/12L	HSTKWGL38/12	6
ALCL185M16/6	185	16.0	18.3	24.3	34	35	32	82	HSTNW40/20	HSMWGL35/12L	HSTKWGL38/12	6
ALCL240M10/6	240	10.0	21.2	28.6	40	41	42	99	HSTNW40/20	HSMWGL50/16L	HSTKWGL38/12	6
ALCL240M12/6	240	12.0	21.2	28.6	40	41	42	99	HSTNW40/20	HSMWGL50/16L	HSTKWGL38/12	6
ALCL240M16/6	240	16.0	21.2	28.6	40	41	42	99	HSTNW40/20	HSMWGL50/16L	HSTKWGL38/12	6
ALCL240M20/6	240	20.0	21.2	28.6	40	41	42	99	HSTNW40/20	HSMWGL50/16L	HSTKWGL51/16	6
ALCL240MB/6	240	-	21.2	28.6	40	41	42	99	HSTNW40/20	HSMWGL50/16L	HSTKWGL51/16	6
ALCL300M10/3	300	10.0	23.8	31.9	45	45	47	107	HSTNW40/20	HSMWGL50/16L	HSTKWGL51/16	3
ALCL300M12/3	300	12.0	23.8	31.9	45	45	47	107	HSTNW40/20	HSMWGL50/16L	HSTKWGL51/16	3
ALCL300M16/3	300	16.0	23.8	31.9	45	45	47	107	HSTNW40/20	HSMWGL50/16L	HSTKWGL51/16	3
ALCL300MB/3	300	-	23.8	31.9	45	45	47	107	HSTNW40/20	HSMWGL50/16L	HSTKWGL51/16	3
ALCL400M12/3	400	12.0	26.8	34.8	49	51	48	116	HSTNW50/25	HSMWGL50/16L	HSTKWGL51/16	3
ALCL400MB/3	400	-	26.8	34.8	49	51	48	116	HSTNW50/25	HSMWGL50/16L	HSTKWGL51/16	3
ALCL500M12/3	500	12.0	30	38	55	60	50	130	HSTNW50/25	HSMWGL50/16L	HSTKWGL68/22	3
ALCL500MB/3	500	-	30	38	55	60	50	130	HSTNW50/25	HSMWGL50/16L	HSTKWGL68/22	3
ALCL630M12/3	630	12.0	33.5	45	64	65	57	146	HSTNW50/25	HSMWGL50/16L	HSTKWGL68/22	3
ALCL630M16/3	630	16.0	33.5	45	64	65	57	146	HSTNW50/25	HSMWGL50/16L	HSTKWGL68/22	3
ALCL630MB/3	630	-	33.5	45	64	65	57	146	HSTNW50/25	HSMWGL50/16L	HSTKWGL68/22	3

Wattmaster

THE BRAND ELECTRICIANS RELY ON

T: 1300 300 747 F: 1300 300 074

www.wattmaster.com.au