

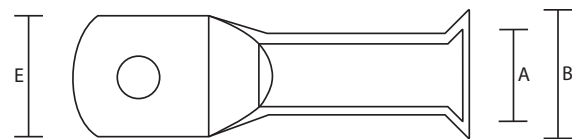
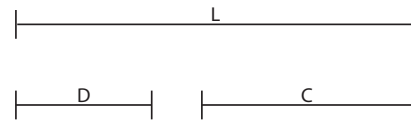
Alco

Non-Insulated Bell Mouth Lugs



FEATURES:

- Non-insulated electro grade copper crimp lugs suitable for stranded to fine-stranded copper cable
- Electro tinned finish for high conductivity
- Includes inspection hole
- Conform to IS 191 (part V GR.ETP) specifications
- Operating temperature: -55°C to $+155^{\circ}\text{C}$



SPECIFICATIONS:

PART NUMBER	CONDUCTOR SIZE (MM ²)	STUD SIZE E (MM)	DIMENSIONS (MM)						PACK QTY	RECOENDED HEAT SHRINK		
			A	B	E	D	C	L		THIN WALL	MED WALL	THICK WALL
ALCLBM10M6/25	10	6	4.5	6.9	12	14	11	28	25	10.5	10	13
ALCLBM10M8/25	10	8	4.5	6.9	12	16	11	30	25	10.5	10	13
ALCLBM10M10/25	10	10	4.5	6.9	17	20	11	35	25	13.5	16	13
ALCLBM16M6/25	16	6	5.9	8	12	15	20	39	25	13.5	16	13
ALCLBM16M8/25	16	8	5.9	8	12	15	20	39	25	13.5	16	13
ALCLBM16M10/25	16	10	5.9	8	17	26	20	50	25	13.5	16	13
ALCLBM25M6/25	25	6	7	9.7	14	16	23	42	25	13.5	16	13
ALCLBM25M8/25	25	8	7	9.7	14	16	23	42	25	13.5	16	13
ALCLBM25M10/25	25	10	7	9.7	19	23	23	50	25	13.5	16	20
ALCLBM25M12/25	25	12	7	9.7	19	16	23	42	25	13.5	16	20
ALCLBM35M6/25	35	8	8.4	11.5	16	19	23	46	25	19	16	20

Wattmaster

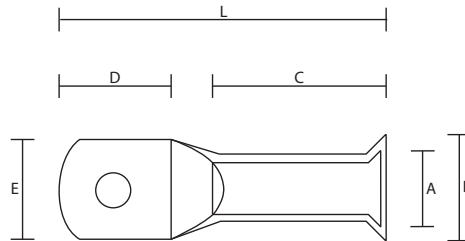
THE BRAND ELECTRICIANS RELY ON

T: 1300 300 747 **F:** 1300 300 074

www.wattmaster.com.au

Alco

Non-Insulated Bell Mouth Lugs



SPECIFICATIONS:

PART NUMBER	CONDUCTOR SIZE (MM ²)	STUD SIZE E (MM)	DIMENSIONS (MM)						PACK QTY	RECOENDED HEAT SHRINK		
			A	B	E	D	C	L		THIN WALL	MED WALL	THICK WALL
ALCLBM35M10/25	35	10	8.4	11.5	16	19	23	46	25	19	16	20
ALCLBM35M12/25	35	12	8.4	11.5	19	27	23	53	25	19	25	20
ALCLBM50M8/10	50	8	9.5	12.7	18	20	23	49	10	19	25	20
ALCLBM50M10/10	50	10	9.5	12.7	18	20	23	49	10	19	25	20
ALCLBM50M12/10	50	12	9.5	12.7	18	20	23	49	10	19	25	20
ALCLBM70M8/10	70	8	11.1	14.3	20	23	24	54	10	19	25	20
ALCLBM70M10/10	70	10	11.1	14.3	20	23	24	54	10	19	25	20
ALCLBM70M12/10	70	12	11.1	14.3	20	23	24	54	10	19	25	20
ALCLBM95M8/10	95	8	13.5	17.5	25	27	25	60	10	24	25	28
ALCLBM95M10/10	95	10	13.5	17.5	25	27	25	60	10	24	25	28
ALCLBM95M12/10	95	12	13.5	17.5	25	27	25	60	10	24	25	28
ALCLBM120M10/10	120	10	15.5	20.6	29	29	32	70	10	24	25	28
ALCLBM120M12/10	120	12	15.5	20.6	29	29	32	70	10	24	25	28
ALCLBM150M10/10	150	10	16.3	22.2	31	34	32	78	10	24	25	28
ALCLBM150M12/10	150	12	16.3	22.2	31	34	32	78	10	24	25	28
ALCLBM185M12/6	185	12	18.3	24.3	34	35	32	82	6	41.5	35	28
ALCLBM240MB/6	240	-	21.2	28.6	40	41	42	99	6	41.5	35	38
ALCLBM240M12/6	240	12	21.2	28.6	40	41	42	99	6	41.5	35	38
ALCLBM300MB/3	300	-	23.8	31.9	45	45	47	107	3	41.5	35	38

Wattmaster

THE BRAND ELECTRICIANS RELY ON

T: 1300 300 747 F: 1300 300 074

www.wattmaster.com.au