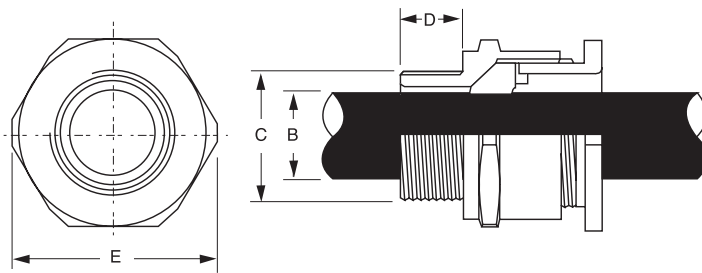


METAL UNARMoured

FEATURES

- General purpose gland for unarmoured PVC and XLPE sheathed cables - IP66 rated
- Large cable range per gland reduces inventory range
- Nickel plated brass body for super corrosion protection and rubber sealing ring
- Conforms to BS6121: Part 1: 2005
- Locknuts Sold Separately



ORDERING INFORMATION

PART NO.	C MOUNTING THREAD DIA. (MM)	D THREAD LENGTH (MM)	B MIN CABLE RANGE (MM)	B MAX CABLE RANGE (MM)	E ACROSS CORNERS (MM)	SHROUD	LOCKNUTS INCLUDED	UNIT	QTY
A2-20/16	20	10	3.1	8.6	24.5	1	NO	EA	1
A2-20S	20	10	6.1	11.6	26.5	1	NO	EA	1
A2-20	20	10	6.5	13.9	30	2	NO	EA	1
A2-25	25	10	11.1	19.9	39.9	3	NO	EA	1
A2-32	32	10	17	26.2	46	3	NO	EA	1
A2-40	40	15	22	32.1	55.3	4	NO	EA	1
A2-50S	50	15	29.5	38.1	61.3	5	NO	EA	1
A2-50	50	15	35.6	44	66.8	5	NO	EA	1
A2-63S	63	15	40.1	49.9	77.5	6	NO	EA	1
A2-63	63	15	47.2	55.9	83.2	9	NO	EA	1
A2-75S	75	15	54	62	89	0	NO	EA	1
A2-75	75	15	60.5	67	94	0	YES	EA	1
A2-90	90	20	68	78	112.8	0	YES	EA	1
A2-100	100	25	78	88	131	0	YES	EA	1
A2-110	110	25	87	98	144.2	0	YES	EA	1

In support of our policy of continuous product improvement we reserve the right to change materials and specifications without notice. Drawings, where used, are not to scale. All dimensions are in millimetres and sizes given are approximate. Where possible, technical MSDS data sheets are made available on the website. All products should be installed and used in accordance with manufacturer's instructions provided. Warning: products may be the subject of registered designs and patents. Refer to website for terms and conditions on warranty.

METAL GLANDS - UNARMoured IP66 - GLAND SELECTION CHART FOR 0.6/1KV UNARMoured PVC CABLES WITH CIRCULAR COPPER CONDUCTORS

CABLE	SINGLE CORE SDI	2 CORE & EARTH	3 CORE & EARTH	3 ^{1/2} CORE & EARTH	4 CORE & EARTH
1.5	A2-20S	A2-20S	A2-20		A2-20
2.5	A2-20S	A2-20	A2-20		A2-25
4	A2-20S	A2-20	A2-25		A2-25
6	A2-20S	A2-25	A2-25		A2-25
10	A2-20S	A2-25	A2-25		A2-32
16	A2-20S	A2-25	A2-32		A2-32
25	A2-20	A2-32	A2-32		A2-40
35	A2-20		A2-40		A2-40
50	A2-25		A2-40	A2-50S	A2-50S
70	A2-25		A2-50S	A2-50	A2-50
95	A2-25		A2-50	A2-50	A2-63S
120	A2-32		A2-63S	A2-63S	A2-63
150	A2-32		A2-63	A2-63	
185	A2-40		A2-63		
240	A2-40				
300	A2-50S				
400	A2-50S				
500	A2-50				
630	A2-63S				

Technical Data

Material

Body Brass
 Seal Neoprene rubber
 Finish Nickel plated

Conformant Standard

BS6121

IP Rating

IP66

Note: This chart should be used as a guide only. Cable dimensions vary by manufacturer and insulation type.

In support of our policy of continuous product improvement we reserve the right to change materials and specifications without notice. Drawings, where used, are not to scale. All dimensions are in millimetres and sizes given are approximate. Where possible, technical MSDS data sheets are made available on the website. All products should be installed and used in accordance with manufacturer's instructions provided. Warning: products may be the subject of registered designs and patents. Refer to website for terms and conditions on warranty.