

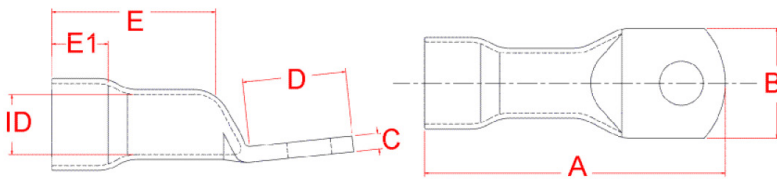
Double Grip Copper Lugs

This range of Double Grip Copper Lugs is designed for high vibration and critical terminations, particularly with flexible cables.

The flared barrel of the lug is "crimped" onto the insulation of the cable, creating a termination capable of withstanding high vibration forces. The barrels of the lugs are normal Australian dimensions and are crimped using normal Australian dies. When crimping flexible cables please follow the directions on our catalogue page "Rules for Crimping Fine Stranded Cable", since the tooling may have to be de-rated due to higher crimping forces, see page B7.

The flared barrel should be test crimped with the recommended die, however since insulation thicknesses vary, a smaller or larger die may suit. This crimp dimension is not critical because it is simply an insulation support.

All CABAC's lugs comply with AS4325.1 and test reports can be provided on request.



TECHNICAL INFORMATION

	DESCRIPTION
Conductive Material	Copper 99.95% pure Oxygen content 30 p.p.m Max. Tensile strength 200 MPa Ductile rating 40% Final metal state fully annealed
Electroplating Material	Tin 99.9% pure Other metals lead + antimony Thickness 5 -10 microns
General Electrical Properties	Total conductivity 99.7% IACS Total resistivity: 1.738 micro-ohm cm
Operating Temperature	-55°C to 155°C due to oxygen-free copper
Dimensional Specification	Tooling is interchangeable between CABAC, Utilux and Burndy

COMPLIANCE AND SAFETY

AS/NZS4325

Test certificates are available on request.

SPECIFICATIONS AND ORDERING INFORMATION

Part No.	Nominal Conductor (mm ²)	ID Barrel	ID Flare	Stud Size (mm)	A (mm)	B (mm)	C (mm)	D (mm)	E (mm)	E1	A/F Hex Die (mm)	No. Crimps	A/F Die on Flare	Unit	Qty
CAL35-12DG	35	8.2	13.9	12	60	20	2.2	22.5	29.2	10.5	9.2	1	11.5/70Cu	EA	1
CAL50-12DG	50	9.5	15.3	12	64	21	2.7	23	32	11.5	10.4	1	14.2/95Cu	EA	1
CAL70-12DG	70	11.2	16	12	67	21	3.2	26	34	13.5	11.5	1	16.5/120Cu	EA	1
CAL95-12DG	95	13.4	18.9	12	76	25	3.9	28	38	13.5	14.2	1	18.3/150Cu	EA	1
CAL120-12DG	120	15.6	23.3	12	83	29	5	26.5	44	14	16.5	1	20.0/185Cu	EA	1
CAL150-12DG	150	16.7	24.95	12	97	32	5.5	42.5	44	15.5	18.3	1	23.1/240Cu	EA	1
CAL185-12DG	185	18.4	28.9	12	105	35	5.7	39	49	22.5	20	1	26.0/300Cu	EA	1
CAL240-12DG	240	21.2	32.9	12	116	40	7.1	41.7	57	22.5	23.1	2	28.1/400Cu	EA	1
CAL300-12DG	300	23.5	34.7	12	126	45	7.8	46.5	62	24	26	2	31.0/500Cu	EA	1

In support of our policy of continuous product improvement we reserve the right to change materials and specifications without notice. Drawings, where used, are not to scale. All dimensions are in millimetres and sizes given are approximate. Where possible, technical MSDS data sheets are made available on the website. All products should be installed and used in accordance with manufacturer's instructions provided. Warning: products may be the subject of registered designs and patents. Refer to website for terms and conditions on warranty.