

CIRCUIT BREAKER LUGS

CABAC's Circuit Breaker Lugs are specially made for terminating large cables to circuit breakers. Since flashover distances have reduced, the connecting tunnel in breakers has become narrower, and fitting lugs in 150 to 250A breakers has become a problem because the palms of conventional lugs are too wide.

These lugs have the same barrel dimensions as our standard range, so normal crimping rules apply, using the correct die for the cable size.

Since many switchboard builders are using flexible cables, these lugs have the unique CABAC bell mouth, which makes insertion of fine stranded conductors into the lugs much easier. These lugs are made from 99.9%+ cu high conductivity copper which gives the best electrical properties possible. If a lug is not listed for your application please contact CABAC sales, as we are continually adding to the range.

Conformant Standards

AS/NZS4325 Part 1; IEC France; DIN/VDE Germany; JIS Japan; BS United Kingdom; UL/NEMA USA

Accepting Authorities

Electricity Services Victoria
Energy Australia
Rail Services Australia
Energex

Western Power - and many other recognised Authorities.

Test Reports available upon request.

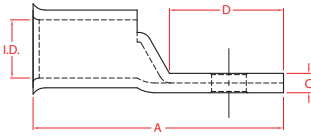


Technical Information	Description	
Conductive Material	Copper 99.95% pure Oxygen Content 30 ppm max Tensile Strength 200 MPa Ductile Rating 40% Final metal state fully annealed	
Electroplating Material	Tin	99.9% pure
	Other Metals	Lead + Antimony
	Thickness	5-10 microns
	Size 400mm ² or above are NOT tinned by default	
General Electrical Properties	Total Conductivity	99.7% IACS
	Total Resistivity:	1.738 micro-ohm cm
Operating Temperature	-55°C to 155°C due to oxygen-free copper	
Dimensional Specification	Tooling is interchangeable between CABAC, Utilux and Burndy.	

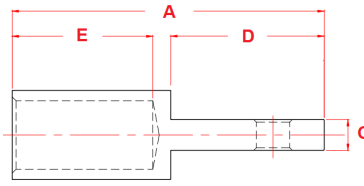
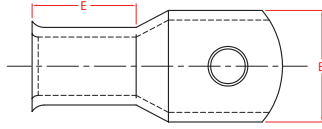
Torque Recommendations	
Recommended torques for hardware should be to Australian and New Zealand Standards	
Thread dia.(mm)	Torque (Nm)
5	5
6	9
8	22
10	44
12	77
16	190

In support of our policy of continuous product improvement we reserve the right to change materials and specifications without notice. Drawings, where used, are not to scale. All dimensions are in millimetres and sizes given are approximate. Where possible, technical MSDS data sheets are made available on the website. All products should be installed and used in accordance with manufacturer's instructions provided. Warning: products may be the subject of registered designs and patents. Refer to website for terms and conditions on warranty.

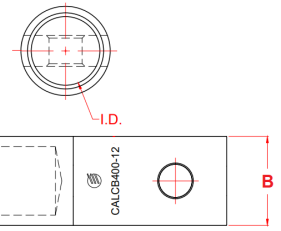
CIRCUIT BREAKER LUGS



Sizes up to 300mm²



Sizes 400mm² and above



SPECIFICATIONS AND ORDERING INFORMATION

Part No.	Nominal Conductor (mm ²)	ID Size (mm)	Stud Size (mm)	A (mm)	B (mm)	C (mm)	D (mm)	E (mm)	A/F Hex Die (mm)	No. Crimps	Crimp Die
CALCB35-6	35	8.2	6	41	15	3	15	21	9.2	1	HT130-C-35
CALCB50-6	50	9.5	6	43	15	3.2	15	22	10.4	1	HT130-C-50
CALCB50-8	50	9.5	8	43	15	3.2	15	22	10.4	1	HT130-C-50
CALCB50-10	50	9.5	10	49	19	3.2	21	22	10.4	1	HT130-C-50
CALCB70-6	70	11.2	6	45	17	3.3	15	24	11.5	1	HT130-C-70
CALCB70-8	70	11.2	8	45	17	3.3	15	24	11.5	1	HT130-C-70
CALCB70-10	70	11.2	10	51	19	3.3	21	24	11.5	1	HT130-C-70
CALCB95-8	95	13.4	8	51	19	3.9	17	27	14.2	1	HT130-C-95
CALCB95-10	95	13.4	10	55	19	3.9	21	27	14.2	1	HT130-C-95
CALCB120-8	120	15.6	8	61	19	5	23	30	16.5	1	HT130-C-120
CALCB120-10	120	15.6	10	61	19	5	23	30	16.5	1	HT130-C-120
CALCB120-12	120	15.6	12	61	19	5	23	30	16.5	1	HT130-C-120
CALCB150-8	150	16.7	8	66	19	5.5	27	30	18.3	1	HT130-C-150
CALCB150-10	150	16.7	10	66	19	5.5	27	30	18.3	1	HT130-C-150
CALCB150-12	150	16.7	12	66	19	5.5	27	30	18.3	1	HT130-C-150
CALCB185-10	185	18.4	10	74	24.5	5.8	32	32	20	1	HT130-C-185
CALCB185-12	185	18.4	12	74	24.5	5.8	32	32	20	1	HT130-C-185
CALCB240-10	240	21.2	10	82	31	7.1	32	38	23.1	3	HT130-C-240
CALCB240-12	240	21.2	12	82	31	7.1	32	38	23.1	3	HT130-C-240
CALCB300-10	300	23.5	10	87	31	7.8	32	42	26	3	HT130-C-300
CALCB300-12	300	23.5	12	87	31	7.8	32	42	26	3	HT130-C-300
CALCB400*	400	26.8	Blank	122	33	12	60	55	28.1	2	ECW-H3D-400
CALCB400-10*	400	26.8	10	122	33	12	60	55	28.1	2	ECW-H3D-400
CALCB400-12*	400	26.8	12	122	33	12	60	55	28.1	2	ECW-H3D-400
CALCB500*	500	30	Blank	125	33	16	60	55	31	2	ECW-H3D-500
CALCB500-12*	500	30	12	125	33	16	60	55	31	2	ECW-H3D-500
CALCB630*	630	34	Blank	135	33	16	60	60	37	4	ECW-H3D-630
CALCB630-12*	630	34	12	135	33	16	60	60	37	4	ECW-H3D-630

*Not tinted by default. For tinned lugs, add "T" to the part number.

In support of our policy of continuous product improvement we reserve the right to change materials and specifications without notice. Drawings, where used, are not to scale. All dimensions are in millimetres and sizes given are approximate. Where possible, technical MSDS data sheets are made available on the website. All products should be installed and used in accordance with manufacturer's instructions provided. Warning: products may be the subject of registered designs and patents. Refer to website for terms and conditions on warranty.