

## COPPER BARRIER LINKS

CABAC Copper Barrier Links are designed for use with paper insulated cables or any situation where an impermeable barrier to oil or moisture is required.

**Note:** Do not crimp close to the centre barrier or the link may shear.

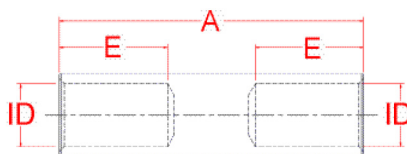
### COMPLIANCE AND SAFETY

- AS/NZS4325 Part 1; IEC France; DIN/VDE Germany; JIS Japan; BS United Kingdom; UL/NEMA USA
- Accepting Authorities: Electricity Services Victoria, Energy Australia, Rail Services Australia, Energex, Western Power - and many other, recognised authorities



### TECHNICAL INFORMATION

	DESCRIPTION	
<b>Conductive Material</b>	Copper 99.95% pure Oxygen content 30 p.p.m. Max. Tensile strength 200 MPa	Ductile rating 40% Final metal state - fully annealed
<b>Operating Temperature</b>	-55°C to 100°C	
<b>General Electrical Properties</b>	Total conductivity 99.7% IACS Total resistivity 1.738 micro-ohm cm	
<b>Dimensional Specification</b>	Tooling is interchangeable between Cable Accessories, Utilux and Burndy	



### SPECIFICATIONS AND ORDERING INFORMATION

Part No.	Nominal Conductor (mm <sup>2</sup> )	Stranding No.	ID Size (mm)	A (mm)	E (mm)	A/F Hex Die (mm)	No. Crimps	Crimp Die	Unit	Qty
CASB10	10	7/1.35	4.5	35	10	5.7	1	HT130-C-10	EA	1
CASB16	16	7/1.70	5.5	55	19	6.3	1	HT130-C-16	EA	1
CASB25	25	19/1.35	7.3	60	21	7.7	1	HT130-C-25	EA	1
CASB35	35	19/1.53	8.2	60	21	9.2	1	HT130-C-35	EA	1
CASB50	50	19/1.78	9.5	65	22	10.4	1	HT130-C-50	EA	1
CASB95	95	37/1.78	13.5	80	27	14.2	1	HT130-C-95	EA	1
CASB120	120	37/2.03	15.5	85	30	16.5	2	HT130-C-120	EA	1
CASB150	150	37/2.25	16.5	85	30	18.3	2	HT130-C-150	EA	1
CASB240	240	61/2.25	21.5	105	38	23.1	3	HT130-C-240	EA	1
CASB300	300	61/2.52	23.5	115	42	26	3	HT130-C-300	EA	1
CASB400	400	61/2.85	26.5	145	55	28.1	3	ECW-H3D-400	EA	1
CASB500	500	61/3.20	30	150	55	31	3	ECW-H3D-500	EA	1
CASB630	630	127/2.52	34	150	56	37	4	ECW-H3D-630	EA	1
CASB800	800	127/2.85	39.5	190	75	43.2	3	ECW-H3D-800	EA	1
CASB1000	1000	127/3.20	44	220	95	48	1	RHU520-1000	EA	1

The standard metric product range is shown below, however we are able to produce any barrier link you require, imperial or metric, on a same day basis, using CABAC's state of the art manufacturing.

In support of our policy of continuous product improvement we reserve the right to change materials and specifications without notice. Drawings, where used, are not to scale. All dimensions are in millimetres and sizes given are approximate. Where possible, technical MSDS data sheets are made available on the website. All products should be installed and used in accordance with manufacturer's instructions provided. Warning: products may be the subject of registered designs and patents. Refer to website for terms and conditions on warranty.