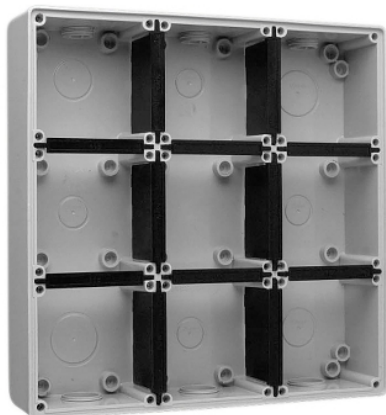


## Product data sheet

### Characteristics

# 56E9-GY

56 Series Enclosure - 9 Gang - 3 x 25mm - 3 x 32mm conduit entries



### Main

Range of product	Series 56
Range	Clipsal - 56 Series
Product brand	Clipsal
Colour	Grey (RAL 7035)

### Complementary

Number of gangs	9 gangs
Device mounting	Surface
Mounting mode	Wall-mounted
Cable entry number	6
Material	PVC (polyvinyl chloride): housing
Number of mounting holes	28
Length	391 mm
Width	296 mm
Depth	63 mm
Height	296 mm
Net weight	1.45 kg
IP degree of protection	IP66 conforming to AS 60529
Standards	AS 3100

### Environment

Ambient air temperature for operation	-25...75 °C
---------------------------------------	-------------

### Offer Sustainability

EU RoHS Directive	Pro-active compliance (Product out of EU RoHS legal scope)  <a href="#">EU RoHS Declaration</a>
-------------------	--

The information provided in this documentation contains general descriptions and/or technical characteristics of the performance of the products contained herein. This documentation is not intended as a substitute for and is not to be used for determining suitability or reliability of these products for specific user applications. It is the duty of any such user or integrator to perform the appropriate and complete risk analysis, evaluation and testing of the products with respect to the relevant specific application or use thereof. Neither Schneider Electric Industries SAS nor any of its affiliates or subsidiaries shall be responsible or liable for misuse of the information contained herein.