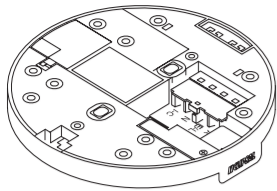


FIRE TEK[®] Mounting base

755RFB2

Smoke Alarm Mounting Base
with Wireless Interconnect, MK2



CLIPSAL
by Schneider Electric

More information is available

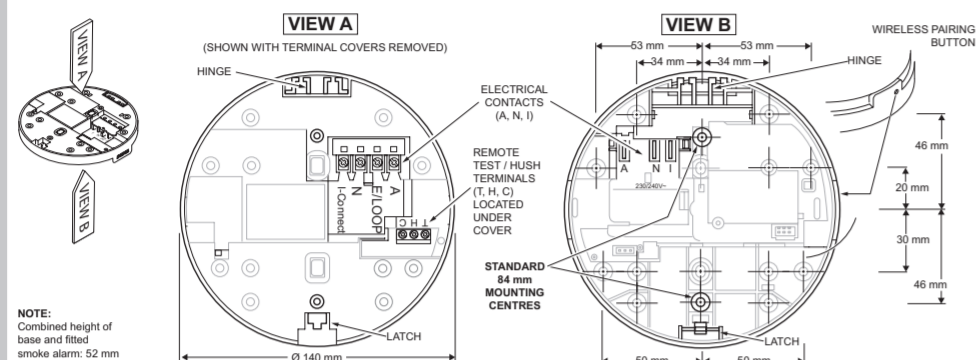


https://download.schneider-electric.com/files?p_Doc_Ref=EAV8159103

Scan the QR code for more information about your Clipsal smoke alarm:

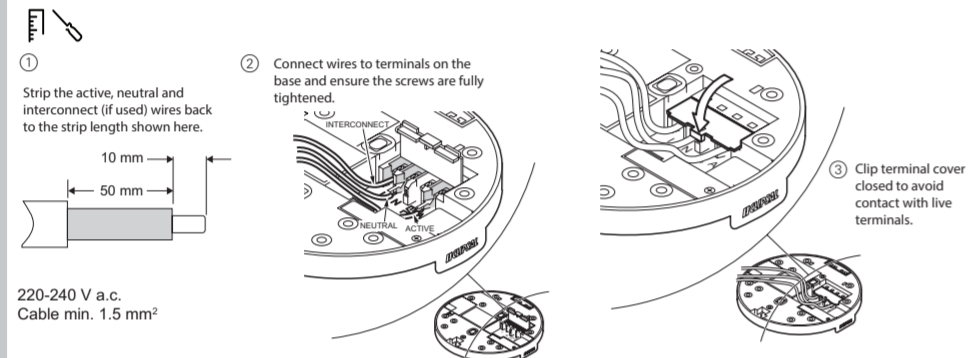
- What smoke alarms can and cannot do
- Developing and practicing a plan of escape
- What to do if an alarm sounds.

Operating elements



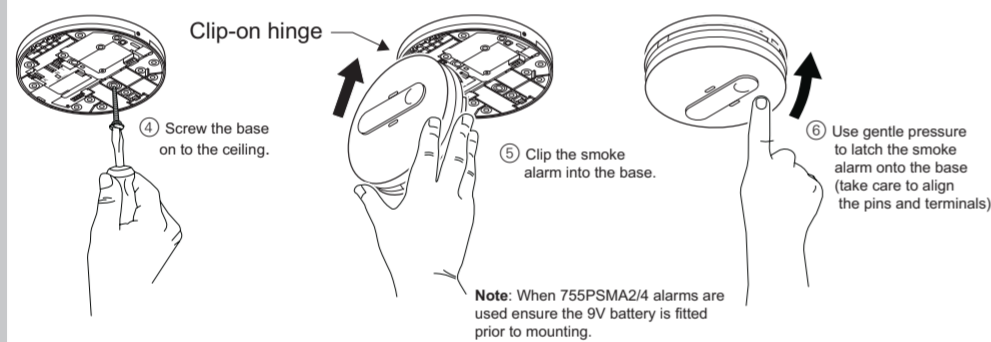
NOTE:
Combined height of base and fitted smoke alarm: 52 mm

Installation



220-240 V a.c.
Cable min. 1.5 mm²

Mounting the smoke alarm

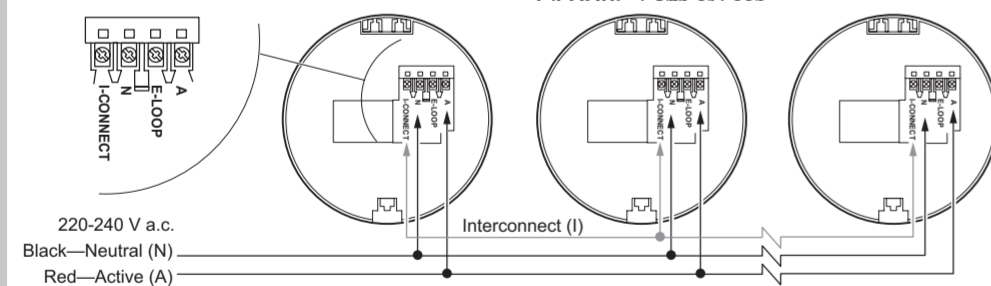


Note: When 755PSMA2/4 alarms are used ensure the 9V battery is fitted prior to mounting.

Interconnecting smoke alarms

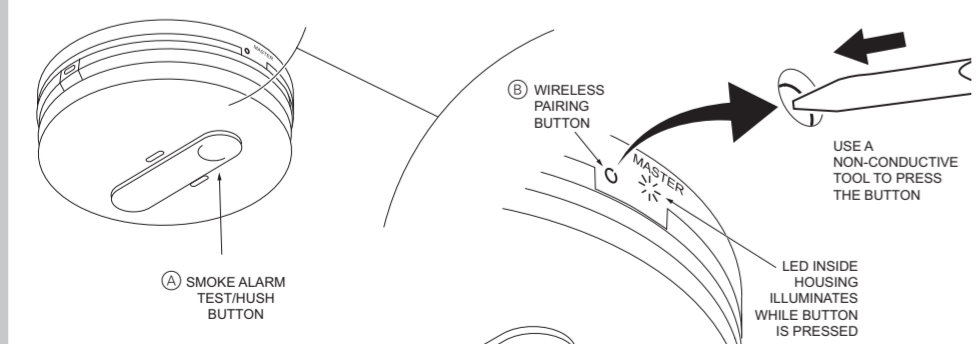
TERMINAL

A: Active/Line
I: Interconnect
N: Neutral



220-240 V a.c.
Black—Neutral (N)
Red—Active (A)

Wireless Interconnection pairing



Note: Smoke alarm must latch onto base before wireless interconnection pairing.

General information

- Leave these instructions with the occupant, to be retained for the life of the product.
- The smoke alarm base must be installed by a licenced electrician.

Compatibility

This product fits with the following Clipsal Smoke alarms:

- 755RLPSMA2
- 755RLPSMA4
- 755PSMA2
- 755PSMA4

- This wireless base is not compatible with, 755RFB base, third party products, or third party systems or fire panels.
- This product is wirelessly compatible with 755LPSMA4 and 755RFB2.

For your safety

⚠ DANGER

RISK OF ELECTRIC SHOCK, EXPLOSION OR ARC FLASH

- This product must only be installed and serviced by appropriately qualified and/or licenced electrical personnel.
- This product must only be used for the purpose described in these instructions and must be installed in accordance with the wiring rules and regulations in that location.
- Isolate the electrical supply before doing any work on this product.
- Ensure the product has been correctly installed and tested for safe operation before reconnecting the electrical supply.

Failure to follow these instructions will result in death or serious injury.

⚠ CAUTION

EQUIPMENT INSTALLATION HAZARD

- All interconnected smoke alarms (max 40) must be supplied from the same interconnection. A common Neutral must be used for the interconnect to operate.
- DO NOT connect the interconnect wire to Active or Neutral.
- Do not connect to a which also has inductive loads connected. Spikes generated by switching inductive loads may damage electrical components within the wireless base or connected smoke alarm.
- Make sure each alarm is fitted to a base and power is connected before setting up interconnection.
- Do not open this base, as there are no user-serviceable parts inside.

Failure to follow these instructions may result in injury or equipment damage.

Choosing the installation location

NOTICE

EQUIPMENT INSTALLATION COMPLIANCE

This product must be installed in accordance with the National Construction Code and any local state legislation requirements.

Failure to follow these instructions may result in a non-compliant installation.

- Ensure there are no obstructions in ceiling mounting locations, such as pipes or cables.

Installing the base

- Only install the product indoors in a stand-alone or wired interconnection setup (see *Interconnecting smoke alarms*).
- Do not attach to surfaces which are damp, freshly painted or otherwise electrically conductive (e.g. metallic surfaces).

Mounting and connecting the smoke alarm

Follow the illustrations

- Turn on the mains power and check:
 - Green LED illuminates denoting active connection.
 - Red LED pulses every 40 seconds to show correct operation.

Press Test/Hush to check smoke alarm functions.

When connecting 755PSMA2/4 smoke alarms

The smoke alarm base will only close with a battery installed. Do not attempt to close without a battery installed.

Interconnecting smoke alarms

(see *Interconnecting smoke alarms illustrations*)

- Always test operation after adding or removing smoke alarms to an interconnection setup.
- Only one 755RFB2 wireless base allowed per wired interconnection circuit with other Clipsal smoke alarms.

Wireless Interconnection pairing between 755RFB2

- Make sure each alarm is fitted to a base and power is connected before setting up interconnection.

- Select one of wireless bases as **MASTER**. Place the **MASTER** label near the wireless Test button. Treat all other units as **SLAVE** units.
- On the **MASTER**, use a pen to press wireless pairing button 3 times quickly (within 2 s). The unit is now in pairing mode indicated by the LED remaining on for 2 minutes.

- To exit pairing mode, press wireless pairing button three times quickly. The red LED turns off.

- While the **MASTER** unit's LED is on, press wireless pairing button 3 times quickly (within 2 seconds) on one **SLAVE**. The **SLAVE** unit's LED will flash 3 times indicating successful interconnection.

- If **SLAVE** unit does not flash its LED 3 times but stays ON, the wireless connection failed. Check the range or reduce the distance between units and make sure the **MASTER** unit's LED remains ON while operating the **SLAVE** unit.

- Repeat step 3 on all other **SLAVE** units.
- After all units have been paired and **MASTER** unit's LED turns off, select one interconnection unit. Press and hold the smoke alarm Test/Hush button for more than 8 s until the second bi-bi-bi is finished. Check other wireless interconnected units receive the RF signal and alarm sounds.

Wireless interconnection pairing between 755RFB2 and 755LPSMA4

- Select one of 755RFB2 or 755LPSMA4 as **MASTER**. Place the **MASTER** label on this unit. Treat all other units as **SLAVE** units.
- Power on all units.
- On the **MASTER** unit, press wireless pairing button of 755RFB2 or press Test/Hush button of 755LPSMA4 3 times quickly (within 2 seconds). The unit is now in pairing mode indicated by the LED remaining on.
- While the **MASTER** unit's LED is on, press wireless pairing button of 755RFB2 or press Test/Hush button of 755LPSMA4 3 times quickly (within 2 seconds) on one **SLAVE** unit. The **SLAVE** unit's LED will flash 3 times on 755RFB2 or green LED remaining on for 3 seconds on 755LPSMA4 indicating successful interconnection.
- Repeat step 4 on all other **SLAVE** units.
- After all units have been paired and **MASTER** unit's LED turns off, select one interconnection unit. Press and hold the smoke alarm Test/Hush button for more than 8 s until the second bi-bi-bi is finished. Check other wireless interconnected units receive the RF signal and alarm sounds.

Wired and Wireless Interconnection setup

Important Note: Follow these steps if combining both wired and wireless interconnection.

- Complete the **Interconnection smoke alarms** setup for each group of wired alarms.
- Set the **Global/Local** switch on the smoke alarm fitted to each 755RFB2 base to **Global**.
- Complete the **Wireless Interconnection pairing** steps to finish the pairing on all 755RFB2 bases.
- Select one smoke alarm in each wired group separately and press and hold the smoke alarm **Test/Hush** button for >8 seconds. Check all wired and wireless interconnected alarms sound and stop after ~1 min.

Remote Test/Hush Function

The Remote Test/Hush feature is controlled by the smoke alarm. Wireless bases provide optional connection for Remote Test/Hush buttons (dry contact momentary remote switches e.g. Clipsal bell press switches).

Connection options for remote test/hush buttons

- Connect remote buttons as either separate Test and Hush buttons, or as a single Test/Hush button to perform both functions.
- Wiring capacity of each terminal is 2x1.5 mm² cables.
- Combination terminal screw head type.
- Max. cable length to Remote Test/Hush switch is 20 m.

Test function (when no smoke present)

Test the LOCAL smoke alarm

Press and hold either the Remote Test button or the Local Test/Hush button and release within 4 seconds. Only the local smoke alarm will sound.

Test the LINKED smoke alarms

Press and hold either Remote Test button or Local Test/Hush button for more than 8 seconds. The linked alarms will sound.

Test wirelessly interconnected alarms

After 8 seconds, a signal is sent to all alarms. When the wireless linked alarms detect the signal, they sound until the signal is no longer transmitted.

- After Test/Hush button has been pressed, wait 10 mins before any additional testing is conducted to avoid any abnormal alarm responses as units have reduced sensitivity during this period.

Hush function - when smoke present

To hush a smoke alarm, identify the alarm that triggered by the flashing red LED (alarm will not silence if it does not have a flashing red LED.) Pressing the local Test/Hush button or the remote hush button will silence the alarm

All smoke alarms that are interconnected will also fall silent.

If multiple interconnected alarms have detected smoke and are flashing red LEDs, press the Remote Hush button or the local Test/Hush button on each alarm to silence.

- After pressing Test/Hush button, wait 10 minutes prior to additional testing to avoid abnormal responses, as alarms have reduced sensitivity during this period.

Disposal



It is recommended to dispose of this device at an authorised electronic waste collection point. Professional recycling protects people and the environment against potential negative effects.

Technical data

Mains Power Source	220-240 V a.c., 50 Hz
Secondary Power Source	Sealed rechargeable battery
Battery Life	10 years (with mains power supplied)
Operating Current	≤60 mA
Operating Temperature	0 °C to 45 °C
Ambient Humidity	5% to 95%
Interconnecting	Max 40 alarms (wireless) Max 40 alarms (wired over 150 m)
Terminal provisions	Active, Neutral, Loop and Interconnect terminals, each accommodates 2 × 1.5 mm ²
Transmit Frequency	433.42 MHz
RF Range	100 m free air, 30 m indoor line of sight
Lower battery warning	Red LED flash once every 10 s
Remote Input	Dry contact momentary switch (for Remote Test/Hush function)
Pairing duration	2 min (recount after each successful pairing)
Approvals	Activfire, RCM
Complies with	AS/NZS 60065, AS/NZS 60950.1, AS/NZS 4268

Trademarks and certifications

Schneider Electric acknowledges that the Australian Standard Certified Product logo is a trademark of SAI Global, and that the Activfire Certified logo is a trademark of CSIRO.



Warranty

We warrant this product to be free from defects in materials and workmanship for a period of 5 (five) years from the date of installation.

Customer care

If you have technical questions, please contact the Customer Care Centre in your country.

Australia

Schneider Electric (Australia) Pty Ltd
Customer Care Australia: 13 73 28
e: customercare.au@schneider-electric.com
www.schneider-electric.com.au

New Zealand

Schneider Electric (NZ) Ltd
After hours service: 0800 735 4357 (NZ only)
Customer Care NZ: 0800 652 999
e: sales@nz.schneider-electric.com
www.schneider-electric.com