

**CREATING LIGHT
DEVELOPING THE**

FUTURE





8 ACCESSORIES

NEMA Base - Electronic

Daylight Switch



8.1

NEMA Base - Cadmium Sulphide

Daylight Switch



8.1

NEMA Base Accessories

Base



8.2

D2 Base


Daylight Switch



8.2

Wire-In


Daylight Switch



8.2

PBL Types


Daylight Switch



8.2

Docklite


Docklite



8.2

Light Lifter

Light Lifter



8.3

Weatherproof Lamp Holder

Lamp Holder



8.3



NEMA Base Types - Electronic

NEMA base electronic PE Cells provide more precise lighting control and stable performance.

SST240



Product Details

→ **Electronic** type with a conventional positive switching ratio. These devices use an integrated chip together with a silicon light-sensing element and maintain specification performance levels for up to five times longer than conventional cadmium sulphide (CdS) controls. The combination of these design features prevents light level drift so that the light switching levels remain constant for the life of the control unit.

Specification

Code	101040
Type	Electronic
Rating	1800VA
Normal Input	185V-305V
Operating Levels	'ON' Lux 32 (+/-10%) 'OFF' 19 Lux (+/-10%)
Time Delay Relay Transfer	30 - 60 Seconds
Temperature Range	-40°C to +60°C
Environmental	100% Relative Humidity
Construction	UV Stabilised Polypropylene
Dimensions	76mm (Ø) 54mm (H)
Base	NEMA

Pictorial is representative only. Specifications may change without notice.

2072NPIT



Product Details

→ **Electronic** type with an inverse switching ratio. These devices use an integrated chip together with a silicon light-sensing element and maintain specification performance levels for up to five times longer than conventional cadmium sulphide (CdS) controls. The combination of these design features prevents light level drift so that the light switching levels remain constant for the life of the control unit.

Specification

Code	101060
Type	Electronic
Rating	1800VA
Normal Input	185V-305V
Operating Levels	'ON' Lux 11 (+/-10%) 'OFF' 48 Lux +/-10%
Time Delay Relay Transfer	5 Seconds
Temperature Range	-40°C to +60°C
Environmental	100% Relative Humidity
Construction	UV Stabilised Polypropylene
Dimensions	76mm (Ø) 54mm (H)
Base	NEMA

Pictorial is representative only. Specifications may change without notice.

NEMA Base Types - Cadmium Sulphide

Daylight switches based on photoconductive, cadmium sulphide (CdS) cells offer stable, long life operation.

M-240



Product Details

→ **M Series** Cell with surge protection
 → The **M Series** features a ceramic substrate forms the base for the CdS. Visible on the surface of this substrate is a complicated electrode pattern with cold-welded cell terminal connections. This design is employed to prevent changes in cell resistivity from causing oxidization which will in turn contribute to photo-control drift. The entire cell, including the terminal post connections, is then coated with a non discolouring, UV resistant clear layer. This organic-based, semiconductor compatible coating provides additional protection from humidity, condensation and airborne contaminants. The unit is also fitted with a metal oxide resistor (MOV) designed to effectively clamp voltage surges that may otherwise damage the unit.

Specification

Code	101035
Type	CdS
Rating	1800VA
Normal Input	185V-305V
Operating Levels	'ON' 16 Lux (+/-10%) 'OFF' 65 Lux (+/-10%)
Time Delay Relay Transfer	30-60 Seconds
Temperature Range	-40°C to +60°C
Environmental	100% Relative Humidity
Construction	High Impact Noryl Housing with UV Inhibited Acrylic Integral Window
Dimensions	76mm (Ø) 54mm (H)
Base	NEMA
Surge Arrester	Fitted

Pictorial is representative only. Specifications may change without notice.

LC208-277**Product Details**

→ The **LC208-277** daylight switch is a more economical cadmium sulphide cell which is designed to be fitted with the universally used NEMA base. It is suitable for general use for electrical loads up to 1800VA.

Specification

Code	101045
Type	CdS
Rating	1800VA
Normal Input	185V-305V
Operating Levels	'ON' 16 Lux (+/- 25%) 'OFF' 65 Lux (+/-10%)
Time Delay Relay Transfer	30-60 Seconds
Temperature Range	-40°C to +60°C
Environmental	96% Relative Humidity
Construction	High Impact Polycarbonate Housing with UV-Inhibited Acrylic Integral Window
Dimensions	76mm (Ø) 54mm (H)
Base	NEMA
Surge Arrestor	Not Fitted

Pictorial is representative only. Specifications may change without notice.

NEMA Base Accessories

Replacement NEMA base sockets are available in either a weatherproof type with an M20 connection or a standard wire-in type.

BCM-15 Base (Weatherproof)**Product Details**

→ The **BCM-15** is a NEMA base compatible locking type socket for use with daylight switching photo-electric (PE) cells. This model is fitted with a weatherproof cover and is suitable for mounting onto an M20 thread. Its dimensions are 86mm in overall height and 65mm in diameter.

Specification

Code	100190
Type	Standard NEMA
Rating	15 Amps, 250VAC
Weatherproof	Yes
Dimensions	65mm (Ø) 86mm (H)
Base	NEMA

Pictorial is representative only. Specifications may change without notice.

CM-15 Base (Standard Wire-In)**Product Details**

→ The **CM15** is also a NEMA base compatible locking type socket for use with daylight switching PE cells. This type comes complete with a mounting bracket and colour coded leads for wiring in. It is rated at 15 Amps 250VAC. Its dimensions are 33mm in height and 65mm in diameter.

Specification

Code	100195
Type	Standard NEMA
Rating	15 Amps, 250VAC
Weatherproof	No
Dimensions	65mm (Ø) 33mm (H)
Base	NEMA

Pictorial is representative only. Specifications may change without notice.

D2 Base Daylight Switches

Some daylight switches used in Australia are designed for the "D2" style base. The D2 - like the NEMA type - relies on pin connectors which insert and twist to lock in place. A difference is that the D2 base is wired inside a fixture.

PBM 2403 (L)



Product Details

→ The **PBM2403 (L)** is a PE cell that utilises the D2 base system. This photoconductive cadmium sulphide (CdS) cell is designed for reliable long-term performance. The thermal relay is normally closed for fail safe operation. This unit is widely used in low voltage street lights and post top units where an easily replaceable PE Cell is required.

Specifications

Code	101020
Type	CdS
Rating	3 Amps
Normal Input	240V/50HZ (+/- 10%)
Operating Levels	'ON' 31.5-125 Lux 'OFF' <400 Lux
Construction	Melamin Phenol Resin
Dimensions	26mm (Ø) 63mm (H) 51mm Cell Cover Length
Base	D2 Type

Pictorial is representative only. Specifications may change without notice.

Wire-In Daylight Switches

EYE Lighting's range of wire-in automatic daylight switches are used to switch luminaires off once light levels rise to a pre-determined level. There are two types in the range; one for internal mounting and the other is weatherproof for external mounting.

AA-1068 Button Type



Product Details

→ The **AA-1068** button photo-control is designed for internal mounting and is constructed using high impact, UV-stabilised polycarbonate. The wire leads exit from the rear and the nipple fits through either the sheet metal side, die cast aluminium housing or plastic enclosure of a luminaire. The polymer encapsulated CdS cell is protected from the elements by locking out air and moisture. The clear plastic lens is UV stabilised and ultrasonically sealed for water tightness.

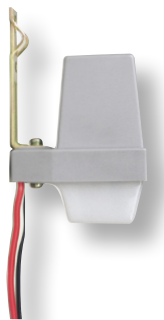
Specifications

Code	101030
Type	CdS
Rating	1200W
Normal Input	185V-305V
Operating Levels	'ON' 16 Lux (+/-10%) 'OFF' 65 Lux (+/-10%)
Time Delay Relay Transfer	>30 Seconds
Temperature Range	-40°C to +65°C
Construction	Polycarbonate Housing UV Stabilised Acrylic Window
Dimensions	52mm (L) 29mm (W) 22mm (H) 152mm Leads 19mm Straight Nipple

Pictorial is representative only. Specifications may change without notice.

PBL Types

PBL2403 3 Amp



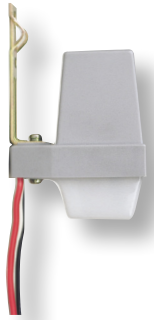
Product Details

→ The **PBL2403 3 Amp** weatherproof CdS PE Cells are compact and ready to mount in an exterior environment. The leads are colour coded in standard colours (Red-Active, Black-Neutral, White-Load) to simplify installation and connection. The cell is supplied complete with its own mounting bracket and is suitable for pole or wall mount.

Specifications

Code	101000
Type	CdS
Rating	3 Amps
Normal Input	240V ±10%
Operating Levels	ON' 10-80 Lux 'OFF' <400 Lux
Construction	Acrylic resin cover with polystyrene body, Steel Mounting Bracket
Weatherproof	Yes
Dimensions	76mm (H) 64mm offset from wall

Pictorial is representative only. Specifications may change without notice.

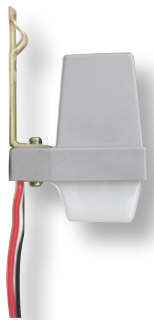
PBL2406 6 Amp**Product Details**

→ The **PBL2406 6 Amp** weatherproof CdS PE Cells are compact and ready to mount in an exterior environment. The leads are colour coded in standard colours (Red-Active, Black-Neutral, White-Load) to simplify installation and connection. The cell is supplied complete with its own mounting bracket and is suitable for pole or wall mount.

Specifications

Code	101005
Type	CdS
Rating	6 Amps
Normal Input	240V ±10%
Operating Levels	ON' 10-80 Lux 'OFF' <400 Lux
Construction	Acrylic resin cover with polystyrene body, Steel Mounting Bracket
Weatherproof	Yes
Dimensions	76mm (H) 64mm offset from wall

Pictorial is representative only. Specifications may change without notice.

PBL2410 10 Amp**Product Details**

→ The **PBL2410 10 Amp** weatherproof CdS PE Cells are compact and ready to mount in an exterior environment. The leads are colour coded in standard colours (Red-Active, Black-Neutral, White-Load) to simplify installation and connection. The cell is supplied complete with its own mounting bracket and is suitable for pole or wall mount.

Specifications

Code	101010
Type	CdS
Rating	10 Amps
Normal Input	240V ±10%
Operating Levels	ON' 10-80 Lux 'OFF' <400 Lux
Construction	Acrylic resin cover with polystyrene body, Steel Mounting Bracket
Weatherproof	Yes
Dimensions	76mm (H) 64mm offset from wall

Pictorial is representative only. Specifications may change without notice.

Docklite

Class I

**Docklite****Product Details**

→ **Body** - The body consists of an adjustable arm and lamp housing. The lamp housing is made from spun aluminium and accommodates a typical PAR-38 (120mm) lamp. The adjustable arm extends to 1060mm (42 inches) and is made from 38mm square steel tubing. Both are powder-coated in "Safety Yellow". All adjustable joints are fitted with heavy-duty zinc plated bolts, washers and lock nuts.

Specifications

Code	251600
Description	Docklite D3 with 42" ARM (1060mm)
Type	LED
Lamp*	EYELITE PAR38 LED Lamp
Control Gear	None required
Light Distribution	Wide Beam

* Lamp Ordered Separately. Pictorial is representative only. Specifications may change without notice.



→ **Lens** - The lamp housing is open without a lens cover.

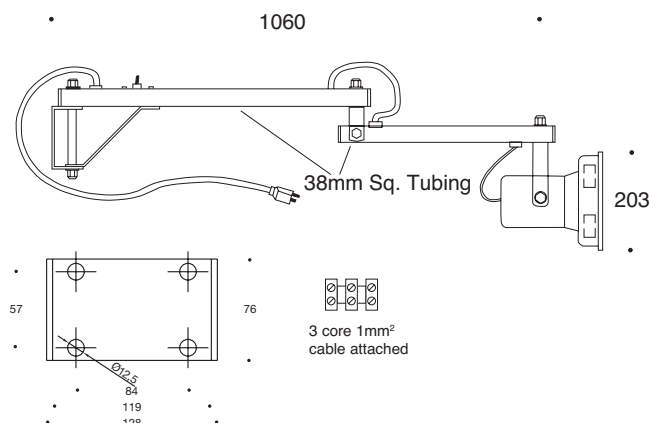
→ **Reflector** - The fixture utilises a lamp with an in-built reflector. The reflector is renewed with each lamp change thus ensuring on-going high performance.

→ **Gear** - No control gear is required when used with LED PAR lamp.

→ **Installation & Maintenance** - The Docklite is supplied fully assembled with a flex cable (including a flat earth pin and plug) and zinc plated heavy-duty steel mounting bracket ready to be fixed to a wall. A switch is recessed into the fixture arm for ease of operation.

→ **Lamp holder** - E27

→ **Weight** - 1.8 kg

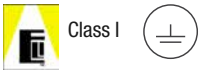


For the latest product information visit www.eyelighting.com.au



Light Lifter

Light Lifter



Class I



Product Details

Code Description

253800	Light Lifter Kit - 15 Metre Length
253805	Light Lifter Kit - 30 Metre Length
253810	Light Lifter Safety Winch

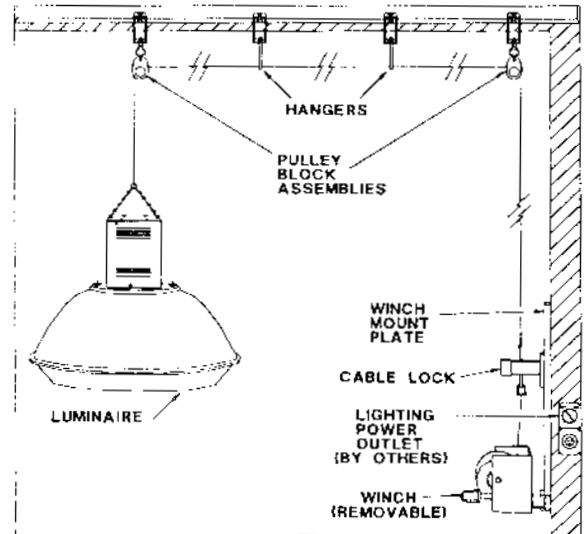
*Pictorial is representative only. Specifications may change without notice.

→ **Body** - The **Light Lifter** consists of a safety winch (ordered separately) cable and a series of hangers/pulley block assemblies. The exact configuration depends on the area to be serviced (eg, the height and luminaire distance from where the winch mount plate is attached). Components are of hot-dipped galvanised steel.

→ **Installation & Maintenance** - Two preconfigured kits are available which include either a 15 metre or 30 metre cable, hanger and pulley set-up. A worm-drive winch is also required to complete the system and is removable once a luminaire is raised or lowered because of the cable lock system. The Light Lifter system can be fully customised to suit each installation requirement. All components can be easily installed with a spanner. The system is rated for a 50kg load. Electrical wiring and connections must be installed by a licensed electrician.

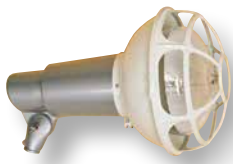
→ **Special Features** - The Light Lifter is easy to position and readily accommodates sloping ceilings. An electric reversible drill attachment can be used to operate the winch.

→ **Weight** - 14.0 kg



Weatherproof Lamp Holders and Accessories

Weatherproof Lamp Holders



→ **Body** - The Weatherproof lamp holders are made from cast aluminium.

→ **Gear** - Incandescent and self-ballasted lamps do not require control gear. Optional remote control gear can be supplied for mercury vapour, metal halide, ceramic metal halide and high pressure sodium reflector back lamps.

→ **Installation & Maintenance** - Installation is made easy through the use of the surface mount and clamp accessories. A special adaptor is also available for 20mm threaded entry. The lampholder is spring-loaded, ensuring a tight seal against the lamp and reduces the chance of the lamp loosening when exposed to mild vibration. The lamp holder is fitted with a silicone gasket that seals against the back of the lamp.

→ **Special Features** - Lamp guards and mounting accessories are made from pre-treated and powder coated steel.

→ **Weight** - 2.4 kg

Code	Description	Wattage (W)	Base	Shape
100005	K-O Lamp Holder (ES) E27	90-180	E27	RSP38/ RSP120
100010	S-O Lamp Holder (GES) E40	270-450	E40	R40/ R135/ R50/ R160
100015	HK-O Lamp Holder (ES) E27	75-250	E27	R44/ R140
100025	HS-O Lamp Holder (GES) E40	150-750	E40	R165 (R53) R180 (R57) R200 (R60)
100040	HSB Lamp Holder (GES) E40	150-750	E40	R165 (R53) R180 (R57) R200 (R60)
100035	HSW Lamp Holder (GES) E40	660 -1000	E40	R88/ R280

Accessories

Code	Description
100045	F1 Adaptor (20mm)
100055	F4 Clamp
100060	F5 Base (20mm Side Entry)
100065	F7 Base
100070	K-O/HK-O Guard
100075	S-O Guard
100080	HS-O Guard
100090	HSW Guard
100100	GHB1 Guard (R60)
100105	K-O/HK-O Anti-Glare Shield
100115	HS-O Anti-Glare Shield

*Pictorial is representative only. Specifications may change without notice.

Weatherproof Lamp Holders & Accessories

K-O Lampholder*	S-O Lampholder*	HK-O Lampholder*	F7 Base	F1 Adaptor	F4 Clamp
F5 Base	K-O / HK-O Guard	HS-O Lampholder*	HSB Lampholder*	HSW Lampholder*	S-O Guard

*Lamp holders shown with optional guards





www.eyelighting.com.au

HEAD OFFICE

15 Industrial Avenue
WACOL QLD
AUSTRALIA 4076

E info@eyelighting.com.au

SALES OFFICES

New South Wales

P +61 (02) 9648 5611
F +61 (02) 9748 6839

North Queensland

P +61 (07) 4779 0177
F +61 (07) 4775 1480

Queensland

P +61 (07) 3335 3575
F +61 (07) 3335 3544

South Australia/Northern Territory

P +61 (08) 8297 5155
F +61 (08) 8297 5030

NEW ZEALAND

18 Levene Place
MT WELLINGTON
AUCKLAND 1641

P +64 (09) 276 8099

F +64 (09) 276 3474

Victoria/Tasmania

P +61 (03) 9335 2188
F +61 (03) 9330 0130

Western Australia

P +61 (08) 9443 5533
F +61 (08) 9443 5832

VOL⁶

