

DUO 350

PRODUCT CODE: DUO350W-W

WARNING

The product must be installed by professional electrician.
 Prior to installation, ensure power is off at fuse box to prevent electrical shock.
 No user serviceable parts inside.
 Indoor use only. Not suitable for damp or explosive environments
 Complies to Australian Standards AS/NZ 3100, AS/NZ 3133, AS/NZ CISPR15, IEC6069 Series
 Before switching power on, ensure wires are securely connected and correct.
 Product warranty is void if product is not installed according to the instructions

Technical Specifications

Operating Temp
0C° - 50C°

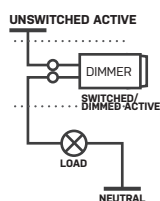
Thermal Derating
25C° - 50C°
(350W - 175W)

MAX DIMMER LOAD AND MULTI GANG

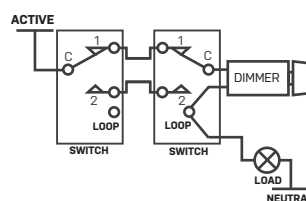
350W | 1** **Multi Gang
 300W | 2** Derating
 250W | 3**
 200W | 4**

Connection Diagram

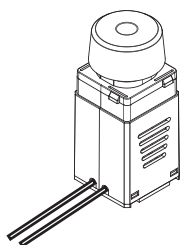
ONE WAY DIMMING (ON/OFF ENABLED)



TWO WAY DIMMING (ON/OFF DISABLED)

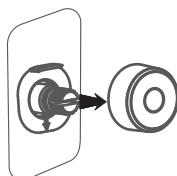


Contents



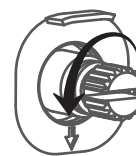
1

After installation, remove the rotary knob.



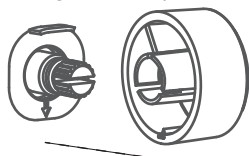
2

Turn the dimmer shaft anti-clockwise until the required minimum brightness is reached (or clockwise to set max brightness level).



3

Align the mechanical stop of the rotary knob toward the LEFT side of the mechanical stop on the dimmer housing to prevent further anti-clockwise adjustment (or RIGHT side when setting max brightness level).



4

Function Setup

BACKLIGHT ON 4 CLICKS	PUSH ON/OFF ENABLE* 5 CLICKS	BACKLIGHT OFF 6 CLICKS	PUSH ON/OFF DISABLE 7 CLICKS
Maximum compatibility option. Dimming range 10%-100%. (Default) 8 CLICKS		Optimised dimming option. Dimming range 2%-100%. 9 CLICKS	

* Two way switching not possible in this mode.
 Push ON OFF allows switching of the light circuit by momentary press of rotary knob.



- Dimming circuits and product compatibility must be validated by the installer before installation. Haneco cannot be responsible for third party changes in dimmer compatibility
- Ripple injection – In some regions of Australia a slight flicker may be experienced when a luminaire is dimmed. This is due to power line signals sent by electricity companies to assist with switching of utilities. This effect is not a malfunction of the luminaire or dimmer but as a result of local installation conditions changing during the day. If this occurs, adjusting the dimmer back to maximum brightness may help minimize flickering.



Warranty

In accordance with Haneco Lighting's standard terms and conditions of sale, Haneco Lighting warrant this product to be free from defects in materials and or workmanship for a period as stated below for goods not subject to incorrect installation, maintenance, operation, mishandling, environmental, unauthorised modifications or electrical operating conditions outside the nominated product specification as detailed in these installation instructions.

The benefits to you given by this warranty are in addition to other rights and remedies you have under law. Our goods come with guarantees that cannot be excluded under the Australian Consumer Law. You are entitled to a replacement or refund for a major failure and compensation for any other reasonably foreseeable loss or damage. You are also entitled to have the goods repaired or replaced if the goods fail to be of acceptable quality and the failure does not amount to a major failure.

Warranty term – 36 months from date of purchase.

How to make a claim?

Step 1 - Contact Haneco Lighting Technical Support

(08) 8297 6373

techsupport@haneco.com.au

Step 2 – Within 30 days of the fault discovery, please contact the original place of the purchase during standard (local) business hours with the following information:

- (a) case number provided by Haneco Technical Support
- (b) proof of purchase
- (b) description and quantity of the claimed fault
- (c) address of installation
- (d) operating hours of the product

Step 3 – It is then the responsibility of the original place of product purchase to report the matter to Haneco Lighting aftersales;

Step 4 – Upon review of your claim and if the product is required to be returned to Haneco Lighting for technical evaluation, then at the owners expense the product must be returned to Haneco Lighting as per the above nominated locations.

Step 5 – Pending the evaluation, the claim will be validated resulting in the product being repaired or replaced with the same or best equivalent product at the discretion of Haneco Lighting, or rejected if the product fault was found to be caused by conditions beyond the responsibility of Haneco Lighting warranty obligations. Consideration of installation, product removal, return freight and testing fees are not the responsibility of Haneco Lighting.