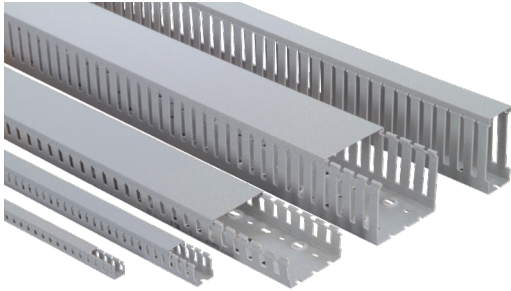


Catalogue No: T1.25.30

CABLE DUCT STANDARD SLOT W25 x H30 x L2000mm

Termination and Wiring Systems > Cable Management > Cable Ducting and DIN Rail > Cable Duct > PVC Cable Duct > Standard Slotted Duct - T1



Cable Duct PVC Slot W25xH30

The wire retainers with predetermined break-lines T1 slotted and T1E narrow slotted range has been widely accepted for its versatility and ability to withstand harsh conditions and environments. Ideal for small to medium size wiring jobs, this specially formulated PVC allows repeated opening and closing on the duct fingers without breaking. Where the ducting catches alight in the case of fire, the PVC properties of the cable ducting will allow the flame to extinguish. - Rigid PVC, RAL 7030 Grey - Self extinguishing - Complete with cover - High quality no-slip cover design - Standard lengths of 2 metres

Representative Photo Only
(actual product may vary based on configuration selections)

SPECIFICATIONS

| | |
|-----------------------------------|--|
| Product Series | T1 |
| Component Type Termination Wiring | Cable Duct |
| Finger Wall Width | 7.5 mm |
| Slot Opening Width | 5 mm |
| Height with Cover | 30 mm with cover |
| Glow Wire Rating | IEC 60695-2-1 960°C |
| Flammability Rating (UL94) | UL 94 V-0 |
| VICAT Temperature | 84 °C |
| Heat Deflection Temperature (HDT) | 72 °C |
| Dielectric Strength | 70 KV/mm V AC |
| Material | PVC |
| Colour | Stone Grey (RAL 7030) |
| Width | 25 mm |
| Length | 2000 mm |
| Package Quantity | 1 qty |
| Standards Compliance | DIN EN ISO 1183 DIN EN ISO 306 DIN 52612 IEC 60243 IEC 60093 |
| Certifications | CE CSA UR |



Catalogue No: **T1.25.30**

CABLE DUCT STANDARD SLOT W25 x H30 x L2000mm

Termination and Wiring Systems > Cable Management > Cable Ducting and DIN Rail > Cable Duct > PVC Cable Duct > Standard Slotted Duct - T1



REFERENCES

IECEX Certificate -

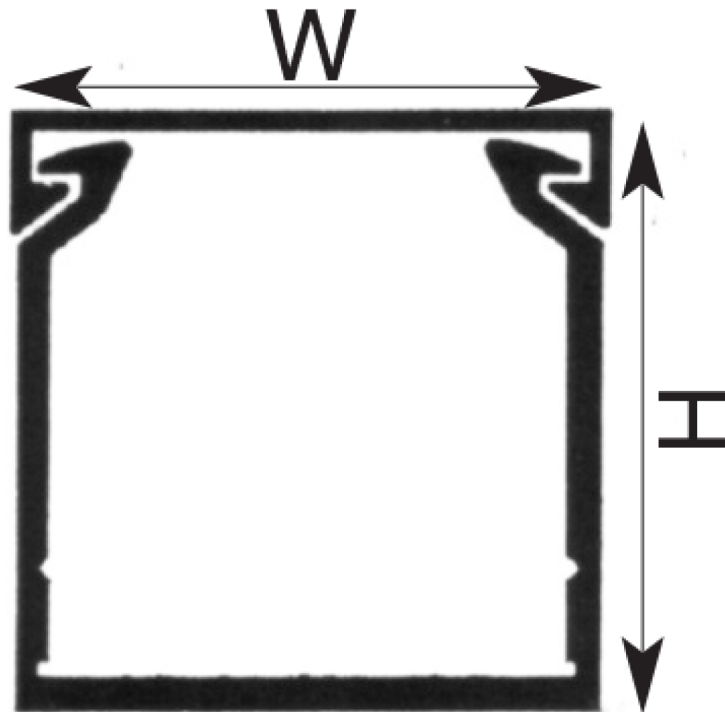
Supplier Declaration of
Conformity: -

Installation Guide: -

User Manual: -

Manufacturer Datasheet: [T12530_Manufacturer Datasheet](#)

Manufacturer Catalogue
& Product Selection: [T12530_Manufacturer Catalogue](#)



Dimension Diagram

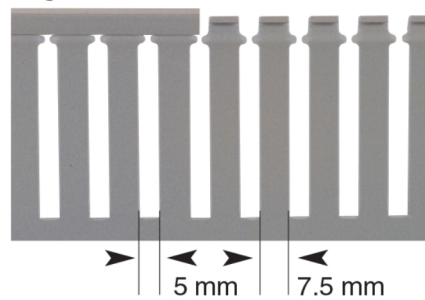
Catalogue No: **T1.25.30**

CABLE DUCT STANDARD SLOT W25 x H30 x L2000mm

Termination and Wiring Systems > Cable Management > Cable Ducting and DIN Rail > Cable Duct > PVC Cable Duct > Standard Slotted Duct - T1



Heights of 18 & 30 mm have 5 mm slot opening width and 7.5 mm finger wall width



Technical Diagram