



UTILUX COPPER CRIMP LUGS CG TYPE

KEY FEATURES

- Range 0.5 - 1200mm²
- Seamless copper tube
- Electro tinned
- Cable area clearly identified on the lug
- Tested to AS/NZS 4325.1:1995

Utilux is a brand that has built an enviable reputation for high quality, reliable electrical connectors. For over 90 years, this dynamic Australian brand has been a leader in the field of interconnection systems.

Our aim is to provide the best possible products and services to keep our customers at the cutting edge of industry standards - internationally.

You can be sure that Utilux branded products are fabricated from the finest materials and produced to exacting tolerances. They represent the latest technology and the best design for the tasks they are required to perform.

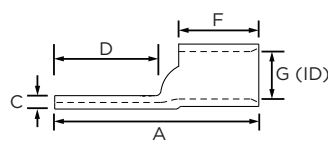
Utilux is a leading brand of electrical connectors sold to original equipment manufacturers and electrical distribution companies throughout Australia, New Zealand and Asia. A comprehensive range, the most up to date production technology and the highest quality control standards ensure that there are Utilux connectors, of optimum reliability and durability, for all major power distribution applications.

As part of the worlds largest electrical connector company, TE Connectivity, the development of products is an ongoing commitment. It is done on a global basis, utilising the talents of many people throughout the organisation to ensure a global product for a local market.

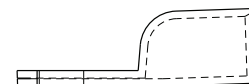
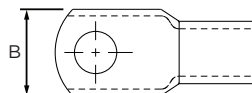
Customers can count on consistent, high quality products, driven by TE's proven innovation and backed by our extraordinary customer support.

UTILUX COPPER CRIMP LUGS

Utilux has engineered the correct combination of material thickness and crimp die selection to ensure that the optimum compression ratios are achieved when crimping. Annealing also ensures that connectors can be crimped without damage and electro tinning minimises corrosion. These features combined with correct termination procedures will ensure a connection that will perform for many years.



Profile with window for 185mm² and below



Profile without window for 240mm² and above

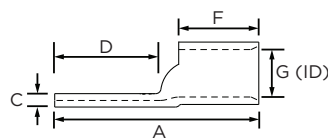
PRODUCT SELECTION INFORMATION

Catalogue Number	Conductor Area (mm ²)	Conductor Stranding	Stud Size	Dimensions (mm)						Crimping Die
				A	B	C	D	F	G	
CG0.5SM4	0.5	1/0.80	M4	17.5	6.4	1.4	9.5	6	2.1	-
CG0.5LM4	0.5	1/0.80	M4	19.1	6.4	1.4	11.1	6	2.1	-
CG0.5SM5	0.5	1/0.80	M5	19.1	8.7	1	11.1	6	2.1	-
CG0.5LM5	0.5	1/0.80	M5	26.6	8.7	1	15.1	9.5	2.1	-
CG0.5M6	0.5	1/0.80	M6	26.2	10.3	0.9	15.1	9.5	2.1	-
CG0.5M8	0.5	1/0.80	M8	26.2	11.5	0.8	15.1	9.5	2.1	-
CG2.5M4	2.5	7/0.67	M4	21.4	9.1	1.1	11.9	8	2.5	-
CG2.5M5	2.5	7/0.67	M5	21.4	9.1	1.1	11.9	8	2.5	-
CG2.5M6	2.5	7/0.67	M6	26.2	10.3	0.9	15.1	8.7	2.5	-
CG2.5M8	2.5	7/0.67	M8	26.2	11.5	0.9	15.1	8.7	2.5	-
CG4SM5	4	7/0.85	M5	21	8.7	1.5	11.1	8	3.3	-
CG4LM5	4	7/0.85	M5	27.3	8.7	1.5	14.7	9.2	3.3	-
CG4M6	4	7/0.85	M6	27.8	10.3	1.2	15.1	9.5	3.3	-
CG4M8	4	7/0.85	M8	28.6	13	1	16.3	9.5	3.3	-
CG4M10	4	7/0.85	M10	28.6	14	1	16.3	9.5	3.3	-
CG6M6	6	7/1.04	M6	27	10.3	1.2	15	9.5	3.7	38-44CU
CG6M8	6	7/1.04	M8	28.6	13.9	0.9	16.7	9.5	3.7	38-44CU
CG6M10	6	7/1.04	M10	28.6	13.9	0.9	16.7	9.5	3.7	38-44CU
CG10SM6	10	7/1.35	M6	27	11.9	1.8	15.5	9.5	4.7	38-57CU
CG10LM6	10	7/1.35	M6	29.4	11.9	1.8	15.5	11.5	4.7	38-57CU
CG10M8	10	7/1.35	M8	28.6	14.3	1.6	16.3	9.5	4.7	38-57CU
CG10M10	10	7/1.35	M10	30.6	14.3	1.6	16.3	9.5	4.7	38-57CU
CG10M12	10	7/1.35	M12	33	17	1.4	20	11	4.7	38-57CU
CG16M5	16	7/1.70	M5	39.7	11.6	2.3	16.3	20.6	5.5	38-63CU
CG16M6	16	7/1.70	M6	39.7	11.6	2.3	16.3	20.6	5.5	38-63CU
CG16M8	16	7/1.70	M8	39.7	13.5	1.9	16.3	20.6	5.5	38-63CU
CG16M10	16	7/1.70	M10	41.5	13.5	1.9	18.5	20.6	5.5	38-63CU
CG16M11	16	7/1.70	M11	43.6	16.7	2.8	19	22.2	5.5	38-77CU
CG16M12	16	7/1.70	M12	46	17.5	1.4	20.5	19	5.5	38-63CU
CG20M6	20	19/0.44	M6	34.9	12.5	2.3	14.3	19	6.3	38-70CU
CG20M8	20	19/0.44	M8	42.1	13.5	2.2	19	20.3	6.3	38-70CU
CG20M10	20	19/0.44	M10	42.1	14.3	2	19	20.3	6.3	38-70CU
CG20M12	20	19/0.44	M11	42.1	15.2	1.9	19	20.3	6.3	38-70CU
CG25M6	25	19/1.35	M6	43.6	16.7	1.9	18	22	7.1	38-77CU
CG25M8	25	19/1.35	M8	43.6	16.7	1.9	18	22	7.1	38-77CU
CG25M10	25	19/1.35	M10	43.6	16.7	1.9	18	22	7.1	38-77CU
CG25M11	25	19/1.35	M11	43.6	16.7	1.9	18	22	7.1	38-77CU
CG25M12	25	19/1.35	M12	51	18.2	1.7	25.4	21	7.1	38-77CU

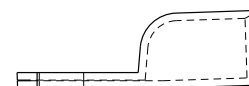
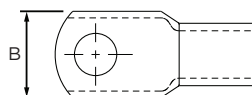
UTILUX COPPER CRIMP LUGS



Utilux has engineered the correct combination of material thickness and crimp die selection to ensure that the optimum compression ratios are achieved when crimping. Annealing also ensures that connectors can be crimped without damage and electro tinning minimises corrosion. These features combined with correct termination procedures will ensure a connection that will perform for many years.



Profile with window for 185mm² and below



Profile without window for 240mm² and above

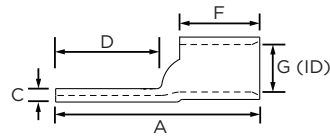
PRODUCT SELECTION INFORMATION

Catalogue Number	Conductor Area (mm ²)	Conductor Stranding	Stud Size	Dimensions (mm)						Crimping Die
CG35M6	35	19/1.53	M6	44	18.2	2.7	17.8	22.2	8.4	38-92CU
CG35M8	35	19/1.53	M8	44	18.2	2.7	17.8	22.2	8.4	38-92CU
CG35M10	35	19/1.53	M10	44	18.2	2.7	17.8	22.2	8.4	38-92CU
CG35M12	35	19/1.53	M12	51.2	20	2.4	24.5	22	8.4	38-92CU
CG38M11	38	7/0.104	M11	52.2	19	3.7	26	22.2	8.7	38-104CU
CG50M8	50	19/1.78	M8	52	20.6	2.8	24.8	22.2	9.4	38-104CU
CG50M10	50	19/1.78	M10	52	20.6	2.8	24.8	22.2	9.4	38-104CU
CG50M12	50	19/1.78	M12	52	20.6	2.8	24.8	22.2	9.4	38-104CU
CG70M6	70	19/2.14	M6	56	20.6	3.2	26	23	11	38-115CU
CG70M8	70	19/2.14	M8	56	20.6	3.2	26	23	11	38-115CU
CG70M10	70	19/2.14	M10	56	20.6	3.2	26	23	11	38-115CU
CG70M12	70	19/2.14	M12	56	20.6	3.2	26	23	11	38-115CU
CG70M16	70	19/2.14	M16	56	27.5	2.4	26	22	11	38-115CU
CG70M11	70	19/2.14	M11	56	22.2	4.7	26	23	11.2	38-130CU
CG70M20	70	19/2.14	M20	75.5	28.6	3.5	43.1	25.4	11.2	38-142CU
CG95M6	95	37/1.78	M6	60	25.4	4	26	27	13.4	38-142CU 40-142CU
CG95M8	95	37/1.78	M8	60	25.4	4	26	27	13.4	38-142CU 40-142CU
CG95M10	95	37/1.78	M10	60	25.4	4	26	27	13.4	38-142CU 40-142CU
CG95M12	95	37/1.78	M12	60	25.4	4	26	27	13.4	38-142CU 40-142CU
CG95M16	95	37/1.78	M16	75.5	27	3.7	43.1	25.4	13.4	38-142CU 40-142CU
CG95M20	95	37/1.78	M20	75.5	28.6	3.5	43.1	25.4	13.4	38-142CU 40-142CU
CG120M10	120	37/2.03	M10	69	30	4.8	30	31	15.5	38-165CU, 40-165CU
CG120M12	120	37/2.03	M12	69	30	4.8	30	31	15.5	38-165CU, 40-165CU
CG120M16	120	37/2.03	M16	69	30	4.8	30	31	15.5	38-165CU, 40-165CU
CG120M20	120	37/2.03	M20	69	30	4.8	30	31	15.5	38-165CU, 40-165CU
CG150M10*	150	37/2.25	M10	78	33.5	5.4	40	27	16.3	38-183CU, 40-185CU
CG150M12*	150	37/2.25	M12	78	33.5	5.4	40	27	16.3	38-183CU, 40-185CU
CG150M16*	150	37/2.25	M16	78	33.5	5.4	40	27	16.3	38-183CU, 40-185CU
CG150M20*	150	37/2.25	M20	78	33.5	5.4	40	27	16.3	38-183CU, 40-185CU
CG185M10	185	37/2.52	M10	82	36.5	5.2	40	31	18.4	38-200CU, 40-200CU
CG185M12	185	37/2.52	M12	82	36.5	5.2	40	31	18.4	38-200CU, 40-200CU
CG185M16	185	37/2.52	M16	82	36.5	5.2	40	31	18.4	38-200CU, 40-200CU
CG185M20	185	37/2.52	M20	82	36.5	5.2	40	31	18.4	38-200CU, 40-200CU
CG240MB*	240	61/2.25	Nil	127	41.6	7.1	54	47.6	21.2	38-231CU, 40-231CU
CG240M10*	240	61/2.25	M10	127	41.6	7.1	54	47.6	21.2	38-231CU, 40-231CU
CG240M12*	240	61/2.25	M12	127	41.6	7.1	54	47.6	21.2	38-231CU, 40-231CU
CG240M16*	240	61/2.25	M16	127	41.6	7.1	54	47.6	21.2	38-231CU, 40-231CU
CG240M20*	240	61/2.25	M20	127	41.6	7.1	54	47.6	21.2	38-231CU, 40-231CU

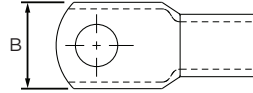
UTILUX COPPER CRIMP LUGS



Utilux has engineered the correct combination of material thickness and crimp die selection to ensure that the optimum compression ratios are achieved when crimping. Annealing also ensures that connectors can be crimped without damage and electro tinning minimises corrosion. These features combined with correct termination procedures will ensure a connection that will perform for many years.



Profile with window
for 185mm² and below



Profile without window
for 240mm² and above

PRODUCT SELECTION INFORMATION

Catalogue Number	Conductor Area (mm ²)	Conductor Stranding	Stud Size	Dimensions (mm)						Crimping Die
CG300MB	300	61/2.52	Nil	127	46	7.9	54	47.6	23.8	38-260CU, 40-260CU
CG300M16	300	61/2.52	M16	127	46	7.9	54	47.6	23.8	38-260CU, 40-260CU
CG300M20	300	61/2.52	M20	127	46	7.9	54	47.6	23.8	38-260CU, 40-260CU
CG400MB	400	61/2.85	Nil	123	49.6	7.9	54	41.3	26.9	40-281CU, 50-281CU, 66-281CU
CG400M16	400	61/2.85	M16	123	49.6	7.9	54	41.3	26.9	40-281CU, 50-281CU, 66-281CU
CG400M20	400	61/2.85	M20	123	49.6	7.9	54	41.3	26.9	40-281CU, 50-281CU, 66-281CU
CG500MB	500	61/3.20	Nil	142.5	54.8	8.2	54	55.5	30	40-310CU, 50-310CU, 66-310CU
CG500M16	500	61/3.20	M16	142.5	54.8	8.2	54	55.5	30	40-310CU, 50-310CU, 66-310CU
CG500M20	500	61/3.20	M20	142.5	54.8	8.2	54	55.5	30	40-310CU, 50-310CU, 66-310CU
CG630MB*	630	127/2.52	Nil	146	63.5	11.5	54	58	33.5	40-370CU, 50-70CU
CG800MB	800	127/2.85	Nil	275	75	14	127	105	39.3	40-432CU
CG1000MB	1000	127/3.20	Nil	295	85	16	127	115	43.5	40-480CU
CG1200MB	1200	127/3.50	Nil	295	85	16	127	115	45.5	40-480CU

All sizes of crimp lugs are compatible with imperial size cables except those marked*

te.com/energy

©2016 TE Connectivity Ltd. family of companies. All Rights Reserved. EPP-2487-DDS1-AU-2/16

Utilux, TE Connectivity and TE Connectivity (logo) are trademarks. Other logos, product and/or company names might be trademarks of their respective owners. While TE has made every reasonable effort to ensure the accuracy of the information in this brochure, TE does not guarantee that it is error-free, nor does TE make any other representation, warranty or guarantee that the information is accurate, correct, reliable or current. TE reserves the right to make any adjustments to the information contained herein at any time without notice. TE expressly disclaims all implied warranties regarding the information contained herein, including, but not limited to, any implied warranties of merchantability or fitness for a particular purpose. The dimensions in this catalog are for reference purposes only and are subject to change without notice. Specifications are subject to change without notice. Consult TE for the latest dimensions and design specifications.

FOR MORE INFORMATION: TE Customer Support Centers

NSW/QLD/NT/ACT: +61 (2) 9554 2695
VIC/TAS/SA: +61 (3) 9271 5243
WA: +61 (8) 9358 7806
New Zealand: +64 (9) 634 4580