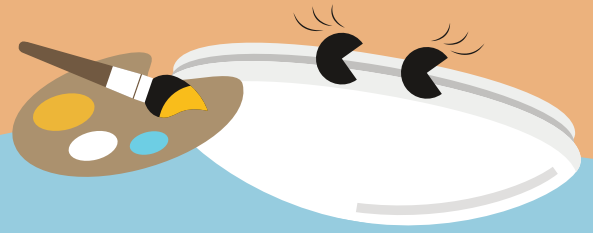


Lena Vario

Circular IP44 LED Oyster



Attentive and adaptable,
Lena Vario lights up
corridors whenever needed

- Three colour temperatures in one product – simply select 3000 K (warm white), 4000 K (cool white) or 5700 K (daylight) to suit the application
- Choose between 1400 and 1800 lm light output
- Optional: Integrated microwave presence sensor maximising the energy saving potential
- Dimmable LED driver suitable with trailing edge and universal dimmers *
- Quality PMMA diffuser for an even light distribution
- Reliable integrated LED technology, ensuring maintenance-free installation and a long lifetime
- Quick and easy installation, loop-in loop-out possible

*see installation instructions for compatible dimmer list



CCT switch
(3000 K, 4000 K
and 5700 K)



1400 and 1800
lumens, up to
93 lm/W



IP44: splash
resistant



Phase
dimmable



Presence sensor
optional



50 000 hours
lifetime

Ideal for ...



Residential



Stairways

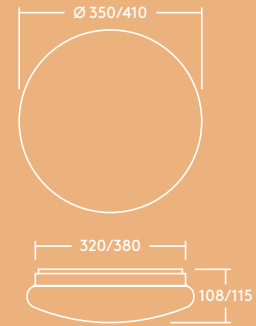


Toilets &
Bathrooms



Circulation
corridors





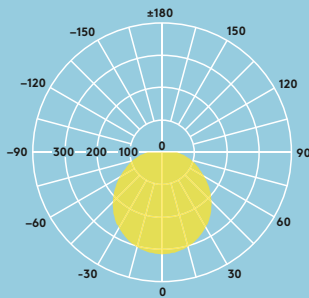
Lighting distribution

100 lm/W



Lena Vario
1800 lm, 4000 K

cd/klm ULOR: 2 %
DLOR: 98 %
LOR: 100 %



Light source information Specification

- 1400lm (15W), 1800lm (18W), up to 100lm/W
- Lifetime 50 000 hours (L80, Ta 25 °C)
- Colour temperature 3000K, 4000K and 5700K in one product
- Beam angle: 120°
- CRI80
- MacAdam (initial): 5 step
- Class II electrical
- IP44
- IK04
- Ambient temperature range: -20 to 40 °C
- RCM certified driver

Installation/Mounting

- Suitable for wall or ceiling mounting
- Quick and easy installation thanks to the twist-and-lock opening mechanism and the piano key terminal for wires up to 2.5mm²

Material/Finish

Backplate: steel, white finish
Diffuser: PMMA, opal

Ordering guide

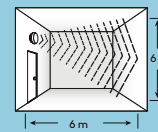
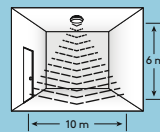
Description	Wt (kg)	SAP Code
LENA VAR 1400 320 DIM 830/40/57	0.62	96649602
LENA VAR 1800 380 DIM 830/40/57	0.67	96649603
LENA VAR 1800 380 DIM 830/40/57 MWS	0.83	96649604

Presence sensor

Lena Vario's microwave sensor option will ensure that light is only delivered when needed. This sensor is a motion switch, which turns on the light on detection of movement, and turns off after a pre-selected hold-time when there are no people around. A daylight sensor is also built-in to prevent the light switching on when there is sufficient natural light.

Sensor range

at 100 % sensitivity



Controlability

Sensitivity	10%, 50%, 75%, 100%
Time	5s, 90s, 5min, 15min
lux	10lux, 20lux, 50lux, disable

